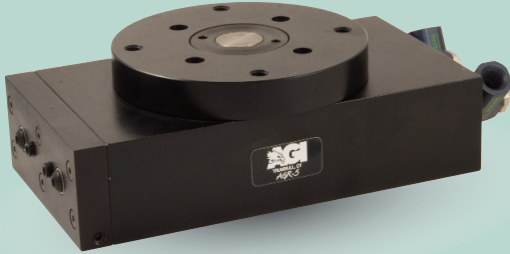


AGR-5 Rotary Actuator

Low Profile, Zero Backlash



FEATURES AND BENEFITS

- Built in adjustable hardstops on output flange stops against a dowel pin imbedded in the body to prevent pinion breakage, and give accurate specific rotation requirements.
- Two large bearings, one on either side of the pinion, provides for steady output flange with high loading capacity.
- Ultra high torque to weight ratio for faster cycle times.
- Compact body design to fit into tight space applications.
- Units are permanently lubricated for non-lube air operation, allowing compliance with OSHA regulations.
- All rotary units have zero backlash at either end of rotation, this keeps the output flange against the hard stop.
- Built in adjustable flow controls allow for maximum cycle times and smooth deceleration.
- Proximity switches are available to monitor end of rotation.
- The AGR unit is fully repairable for cost savings and minimum down time.

SPECIFICATIONS

Design: Rack and Pinion with Flange Hard Stop

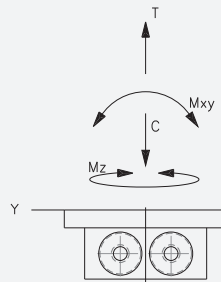
Rotation Range:	0°-180° (Adj. +/- 5°)
Payload:	30 lbs central to axis of rotation [13.6 Kg]
Torque: @80 psi [5.5 BAR]	248 in/lb [28 Nm]
Bearing Load: Dynamic	1495 lbs [6650 N]
Static	2260 lbs [10050 N]
Rotation Time:	No load .40 second
Pressure Range: Low/High	30-120 PSI [2-8 BAR]
Temperature Range: Low/High	-20°/180°F [-28°/80°C]
Backlash:	Zero
Accuracy:	.001 concentric and perpendicular to axis of rotation

Material: High Strength, Hard Coated Aluminum Alloys, Steel

Weight:	8.5 lb [3.9 kg]
Piston Diameter: (2x)	1.625 in [41.3 mm]

January 2009 - PATENTED Made in the USA

LOADING INFORMATION

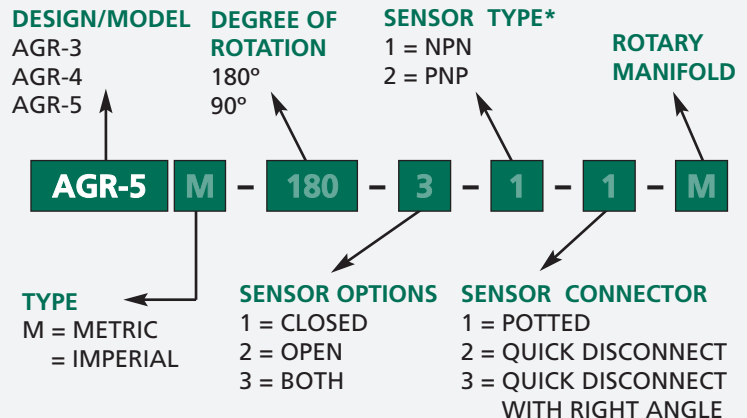


Max Tensile T	Static 800 lbs [3558 N]	Dynamic 160 lbs [711 N]
Max Compressive C	2000 lbs [8800 N]	400 lbs [1780 N]
Max Moment M_x	1000 in/lb [113 Nm]	200 in/lb [22.6 Nm]
Max Moment M_y	1000 in/lb [113 Nm]	200 in/lb [22.6 Nm]

WARNING! Do not exceed tooling jaw length.

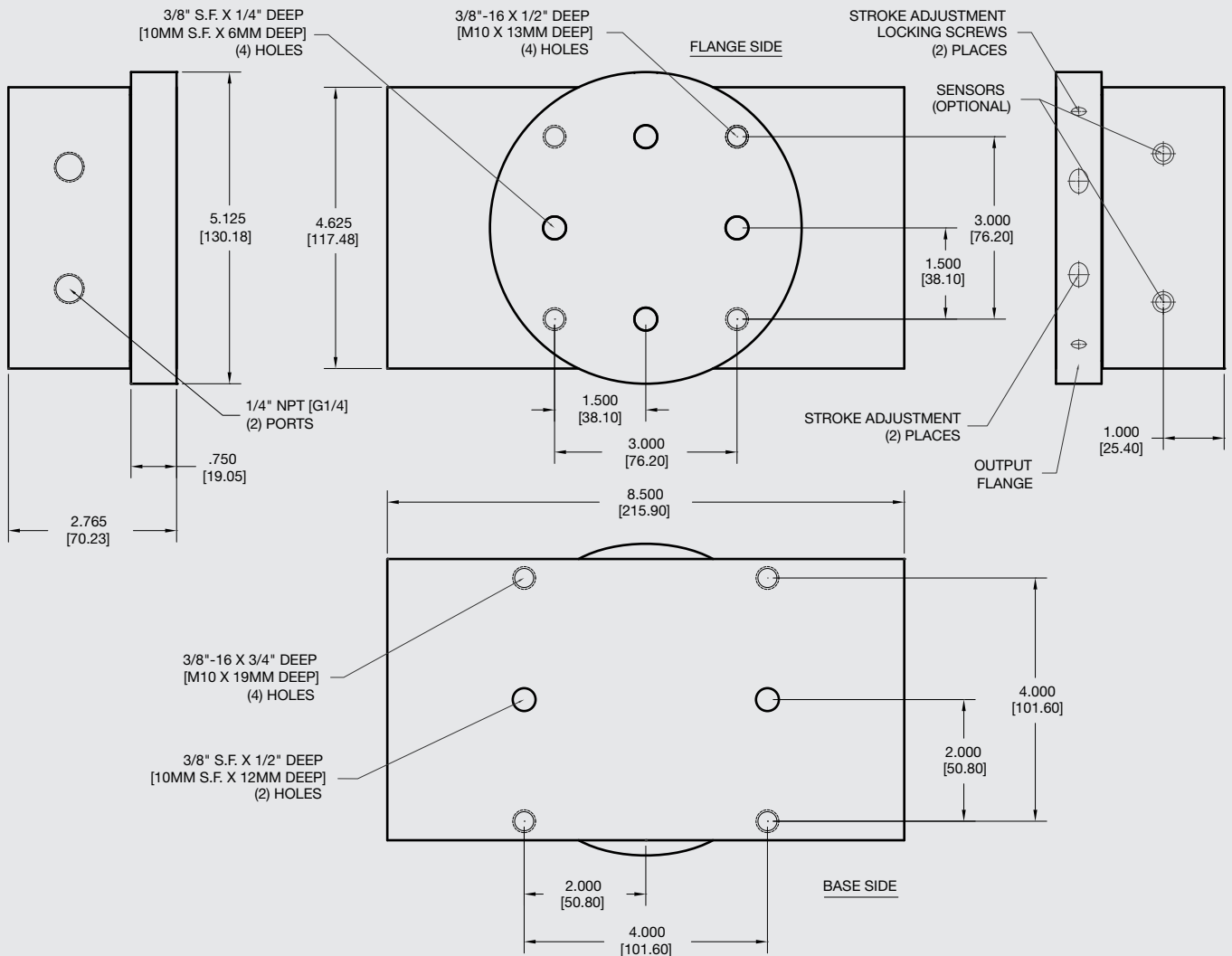
HOW TO ORDER

When ordering, please specify:
Design/Model Number and Options.



* NOTE: Proximity 4mm dia., 5-24 VDC, 22 mA and comes with 2 meter cable.

Sensor Part # SPC05, SPQ05, SNC05, SNQ05



Unless noted, all tolerances are as indicated here:



All Dowel Holes are SF (Slip Fit) Locational Tolerance $\pm .0005"$ [.013mm]



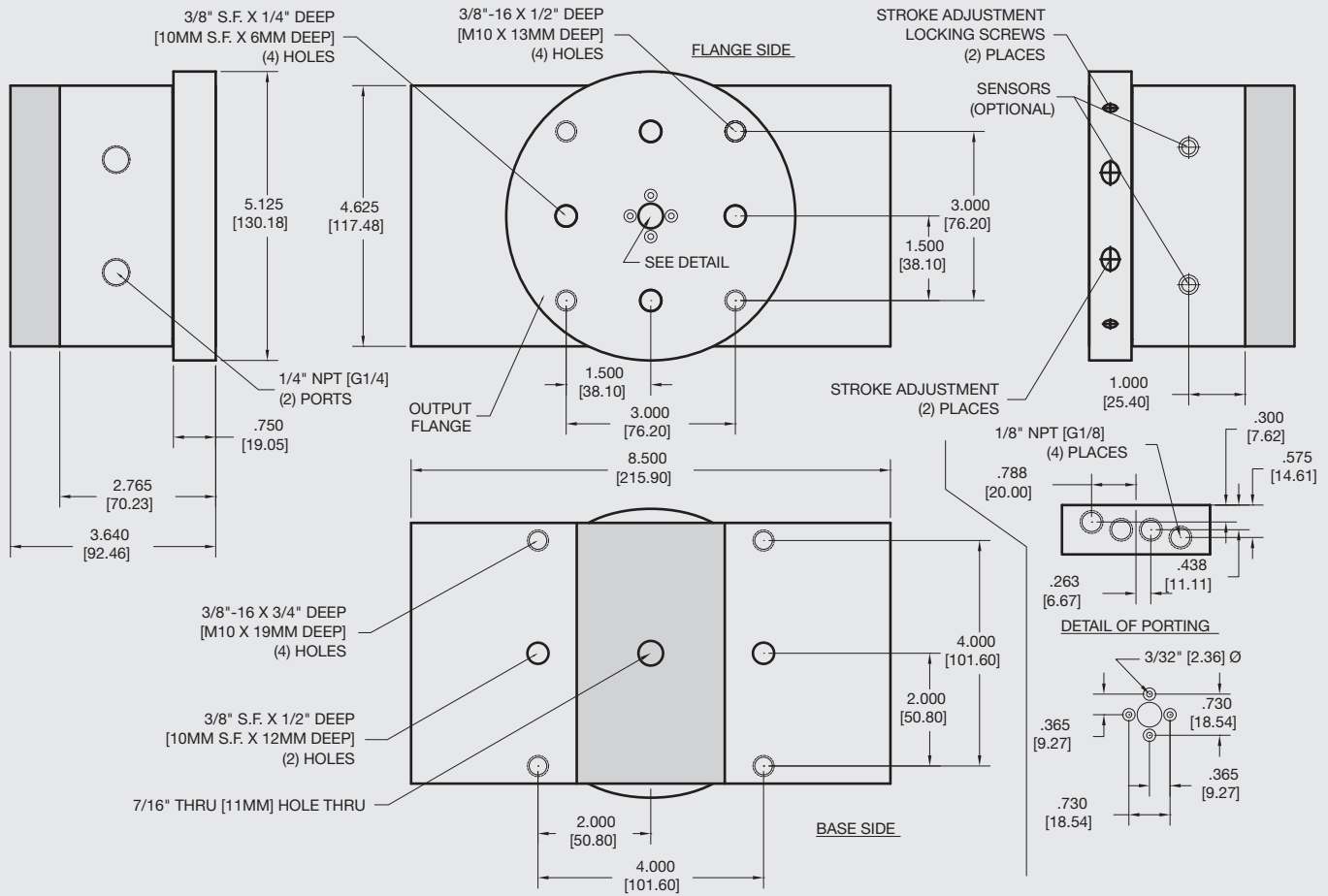
Metric Threads Course Pitch

Imperial:
Inch 0.00 = $\pm .01$
0.000 = $\pm .005$
0.0000 = $\pm .0005$

Metric: [0.] = $\pm .25$
[mm] [0.0] = $\pm .13$
[0.00] = $\pm .013$

AGR-5 Rotary Actuator

Low Profile, Zero Backlash, Optional Rotary Manifold



-M option
Rotary Manifold shown shaded

Unless noted, all tolerances are as indicated here:



All Dowel Holes are SF (Slip Fit) Locational Tolerance ± .0005" [.013mm]



Metric Threads Course Pitch

Imperial: 0.00 = ±.01
Inch 0.000 = ±.005
0.0000 = ±.0005

Metric: [0.] = ±.25
[mm] [0.0] = ±.13
[0.00] = ±.013