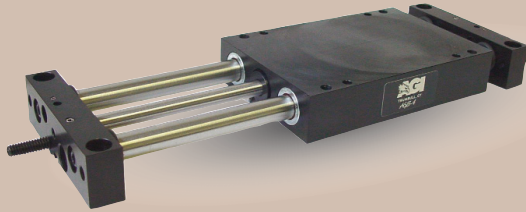




AGS-4 Powered Slide

Built-In Air Cylinder



FEATURES AND BENEFITS

- Compact lightweight unit with built-in air cylinder.
- Linear ball bearings ride on precision hardened ground steel shafts.
- Units are permanently lubricated.
- Pistons seals are U-Cup type for long service life.
- Aluminum body and end blocks contain tapped holes and dowel pin holes for precision mounting or fixturing.
- Custom mounting holes and air ports can be added. Please consult factory.
- Main body or end blocks can be anchored due to the 1/16" height clearance.
- Standard built-in stroke adjustment for precise repetitive operation.
- Proximity switches are available to monitor end of stroke position of the body.
- Optional shock absorbers can be ordered for smooth operation.
- Series AGS is fully field repairable for cost savings and minimum down time. Repair kits are available for repairs or maintenance.

SPECIFICATIONS: AGS-4

Design: Built-in air cylinder, linear bearings on steel hardened shafts

Stroke: 1 to 4 in [25.4 mm to 101 mm]

Thrust Force @ 80 PSI [5.5 BAR]
25 lbs [111 N]

Recommended Speed: 2-14 in/sec [0.5-.35 m/sec]

Pressure Range:
Low/High 20-120 PSI [1.4-8 BAR]

Temperature Range:
Low/High -20°/150°F [-28°/80°C]

Side Play: ± 0.001 [.03 mm]

Maximum Payload: 25 lbs [11.3 kg]

Material: High Strength, Aluminum Alloys, Steel Components

Weight: 3.5 lbs [1.6 kg]

Piston Diameter: .750 in [19 mm]

SPECIFICATIONS: AGS-4-X

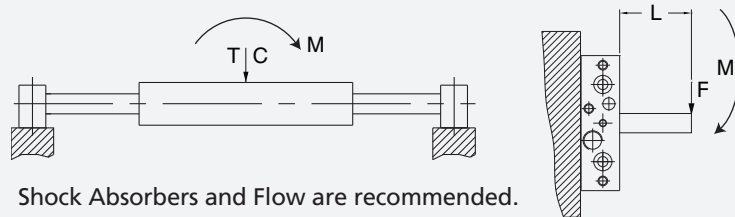
Custom Stroke: X= 0 to 4 in [101.6 mm]

All Other Specifications: Same As Above

PAYLOAD DATA

Max Tensile T	90 lbs	[400 N]
Max Compressive C	90 lbs	[400 N]
Max Moment M_x	220 in/lb	[25 Nm]
Max Moment M_y	220 in/lb	[25 Nm]
Max Moment M_z	220 in/lb	[25 Nm]

Deflection @ Max load 0.003
Maximum Payload (25 lbs)
Recommended load for smooth operation.



Shock Absorbers and Flow are recommended.

HOW TO ORDER

When ordering, please specify:
Design/Model Number and Options.

DESIGN/MODEL

AGS-4
AGS-5
AGS-6

SENSOR OPTIONS

1 = LEFT
2 = RIGHT
3 = BOTH

SENSOR TYPE*

1 = NPN
2 = PNP

SHOCK ABSORBERS

AGS-4 M - 4 - 3 - 1 - 1 - S

TYPE
M = METRIC
= IMPERIAL

SENSOR CONNECTOR

1 = POTTED
2 = QUICK DISCONNECT
3 = QUICK DISCONNECT WITH RIGHT ANGLE

AGS-4 STROKE (1", 2", 3", 4")
AGS-5 STROKE (1", 2", 3", 4", 5")
AGS-6 STROKE (1", 2", 3", 4", 5", 6")

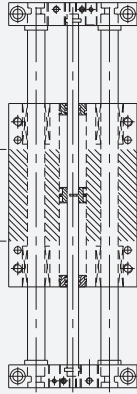
* NOTE: Proximity sensors are 8 mm diam., 12-30 VDC, 50 mA and come with 2 meter cable.

Sensor Part # SNC08, SNQ08, SPC08, SPQ08

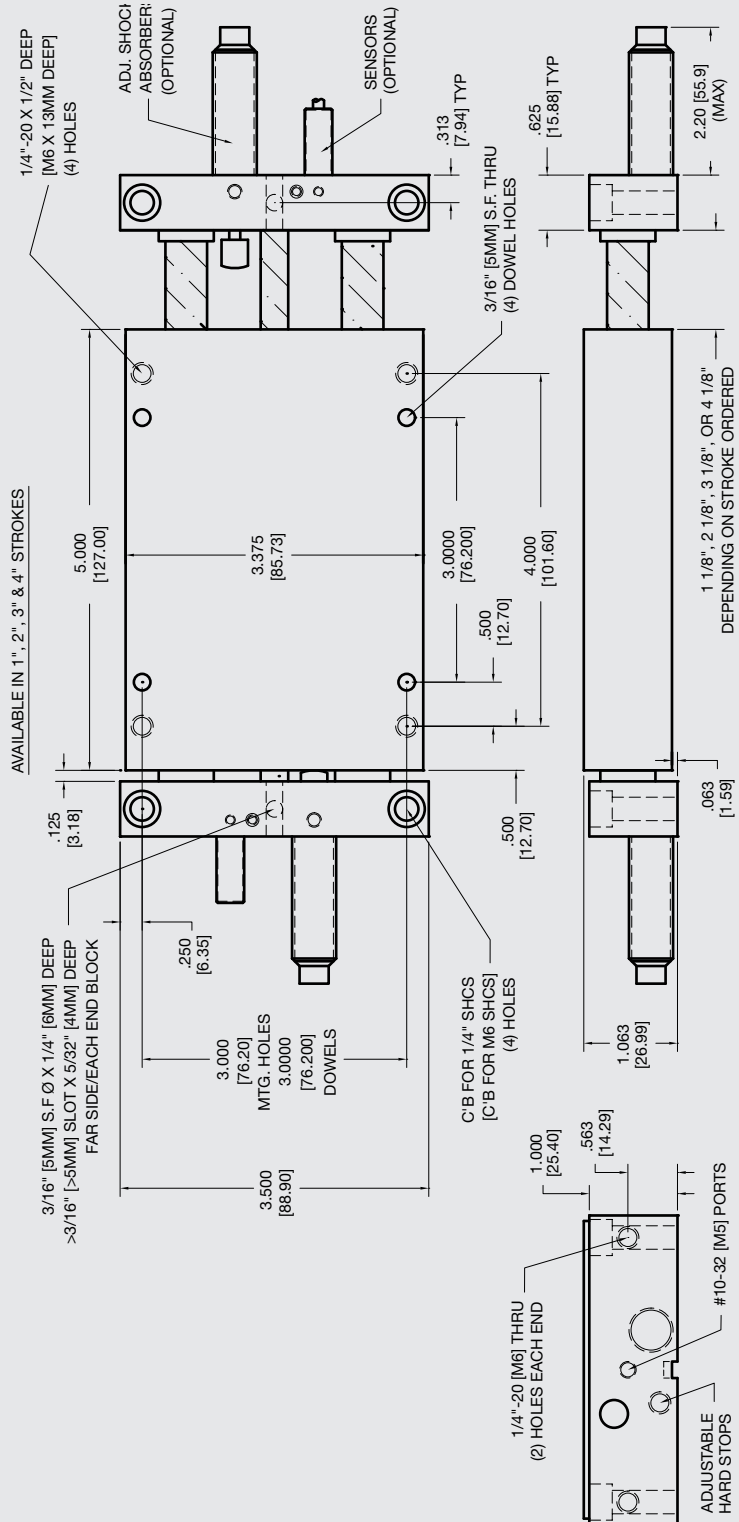
January 2009 - PATENTED Made in the USA

CUSTOM MOUNTING AREA

NOTE: The end blocks and body can be drilled and tapped from top of back side.
 Shaded area available for custom drilling and tapping.
 For drilling and tapping end blocks, please consult the factory.



WARNING! Do not exceed mounting screw depth. LOOK! More Technical specifications for sensors on "Sensors Accessories" page.




Download 2D & 3D CAD Files
 @ www.AGI-Automation.com

Unless noted, all tolerances are as indicated here:



All Dowel Holes are SF (Slip Fit) Locational Tolerance ± .0005" [0.13mm]



Metric Threads Course Pitch

Imperial:
 Inch 0.00 = ±.01
 0.000 = ±.005
 0.0000 = ±.0005

Metric:
 [0.] = ±.25
 [0.0] = ±.13
 [0.00] = ±.013