

AGT-4 Powered Slide

Linear Thruster



FEATURES AND BENEFITS

- Floating piston rod coupling eliminates cylinder binding.
- Compact, lightweight unit with replaceable air-cylinder.
- Units are permanently lubricated.
- Optional stroke adjustment for precise, repetitive operation.
- Proximity switches are available to monitor end of stroke position of the body.
- Optional shock absorbers can be ordered for smooth operation.
- Aluminum body end blocks contain taped holes and dowel pin holes for precision mounting or fixturing.
- Standard end plate to stop shaft vibrations.

SPECIFICATIONS

Design: Replaceable air cylinder, linear bearings on steel hardened shafts

Stroke: 8 in max. (1" increments)
[203 mm] [25.4 mm]

Thrust Force @ 80 PSI [5.5 BAR]
70 lbs (multiply force factor by input pressure in PSI)

Extended: 88 lbs [392 N]

Retract: 81 lbs [360 N]

Recommended Speed: 1-40 in/sec

Pressure Range:
Low/High 20-120 PSI [1.4-8 BAR]

Temperature Range:
Low/High -20°/150°F [-28°/80°C]

Side Play: ± 0.001 [0.03 mm]

Deflection: See Chart

Maximum Payload: 25 lbs [11.3 kg]

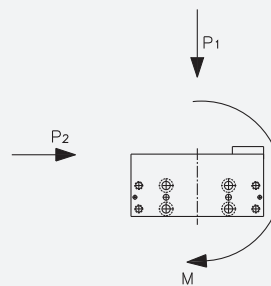
Material: High Strength, Aluminum Alloys, Steel Components

Weight: 3.75 lbs + 3 oz/in
[1.7 kg + 2.6 g/mm]

Shaft Diameter: 1/2 in [12.7 mm]

Piston Diameter: 1 1/16 in [27 mm]

PAYLOAD FORCES

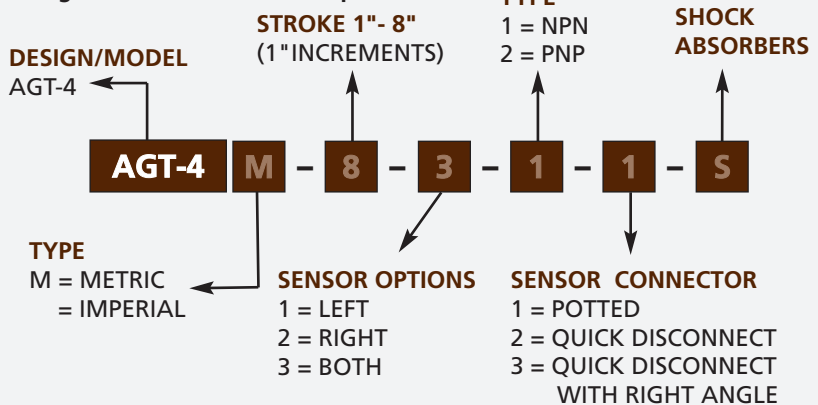


WARNING! Do not exceed mounting screw depth.

LOOK! More Technical specifications for sensors on "Sensors Accessories" page.

HOW TO ORDER

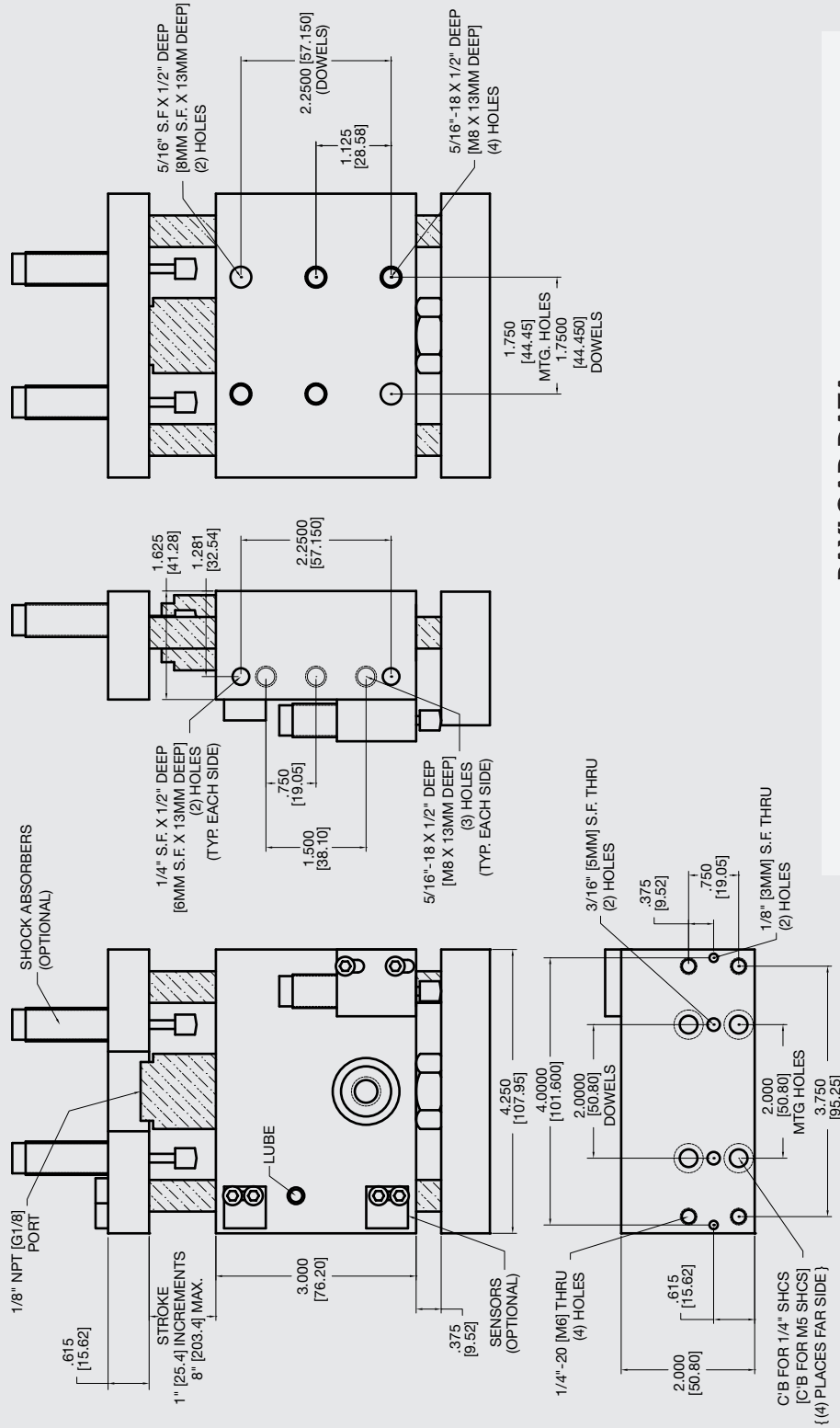
When ordering, please specify:
Design/Model Number and Options.



* NOTE: Proximity sensors are 8 mm diam., 12-30 VDC, 50 mA and come with 2 meter cable.

Sensor Part # SNC08, SNQ08, SPC08, SPQ08

January 2009 - PATENTED Made in the USA



PAYLOAD DATA

Stroke Length	Maximum Load (lbs)	Maximum Moments (in-lbs)	Maximum Deflection P1	Maximum Deflection P2
1 [25.4 mm]	25 [11.3 kg]	95 [10.7 Nm]	.001 [.03 mm]	.001 [.03 mm]
2 [50.8 mm]	25 [11.3 kg]	75 [8.5 Nm]	.002 [.05 mm]	.002 [.05 mm]
3 [76.2 mm]	25 [11.3 kg]	60 [6.7 Nm]	.004 [.10 mm]	.003 [.07 mm]
4 [101.6 mm]	25 [11.3 kg]	53 [6 Nm]	.006 [.15 mm]	.005 [.13 mm]
5 [127.0 mm]	25 [11.3 kg]	46 [5.2 Nm]	.008 [.20 mm]	.007 [.17 mm]
6 [152.4 mm]	25 [11.3 kg]	40 [4.5 Nm]	.014 [.35 mm]	.011 [.28 mm]
7 [XXX mm]	25 [11.3 kg]	36 [4 Nm]	.018 [.45 mm]	.016 [.40 mm]
8 [XXX mm]	25 [11.3 kg]	33 [3.7 Nm]	.022 [.55 mm]	.018 [.45 mm]



Unless noted, all tolerances are as indicated here:

All Dowel Holes are SF (Slip Fit) Locational Tolerance ± .0005" [.013mm]
 Metric Threads Course Pitch
 Imperial: 0.00 = ±.01
 Inch: 0.000 = ±.005
 0.0000 = ±.0005
 Metric: [0.] = ±.25
 [mm] [0.0] = ±.13
 [0.00] = ±.013