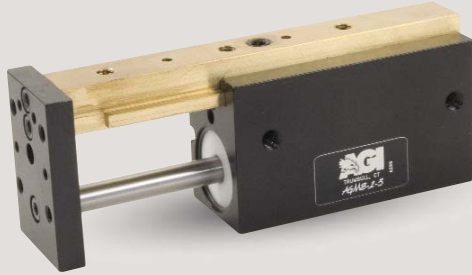




# AGMS-2-3 Feed Escapement

## Single Finger



### FEATURES AND BENEFITS

- Compact, Long Stroke Escapements made for separating and isolating individual parts from tracks, vibratory feeders or conveyors.
- T-Slot bearing support for the carriage and end plate offers superior load bearing performance throughout the stroke.
- Standard built-in stroke adjustment and stroke lock for precise, repetitive operation.
- Compact, lightweight unit with built-in cylinder.
- Piston seals are U-CUP type for long service life.
- Hall Effect sensors are available to monitor stroke position.
- Multiple mounting surfaces on the body and endplate with threaded and counterbored holes for easy mounting choices.
- Adjustable stroke on extend and retract.

### SPECIFICATIONS

**Design:** Built-in air cylinder  
T-slot slide

**Stroke (Adjustable):** 1.5 in [38.1 mm]

**Thrust Force @ 80 PSI [5.5 BAR]**

Extended: 35 lbs [155 N]  
Retract: 33 lbs [146 N]

**Recommended Speed:** 2-12 in/sec [0.5-.3m/sec]

**Pressure Range:** Low/High 20-120 PSI [1.4-8 BAR]

**Temperature Range:** Low/High -20°/150°F [-28°/80°C]

**Side Play:** ± 0.001 [.03 mm]

**Maximum Payload:** 24 lbs [10.8 kg]

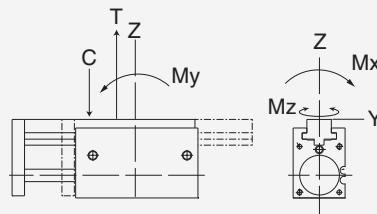
**Material:** High Strength, Aluminum Alloys, Bronze

**Weight:** 6.8 oz [193 g]

**Piston Diameter:** .750 in [19 mm]

January 2008 - PATENTED Made in the USA

### MAXIMUM FORCES & MOMENTS



|                   | Static          | Dynamic           |
|-------------------|-----------------|-------------------|
| Max Tensile T     | 180 lbs [800 N] | 77 lbs [342 N]    |
| Max Compressive C | 180 lbs [800 N] | 77 lbs [342 N]    |
| Max Moment $M_x$  | 70 in/lb [8 Nm] | 34 in/lb [3.8 Nm] |
| Max Moment $M_y$  | 70 in/lb [8 Nm] | 34 in/lb [3.8 Nm] |
| Max Moment $M_z$  | 70 in/lb [8 Nm] | 34 in/lb [3.8 Nm] |

### HOW TO ORDER

When ordering, please specify:  
Design/Model Number and Options.

**DESIGN/MODEL**  
AGMS-2-1  
AGMS-2-2  
AGMS-2-3  
AGMS-2-4

**METRIC**

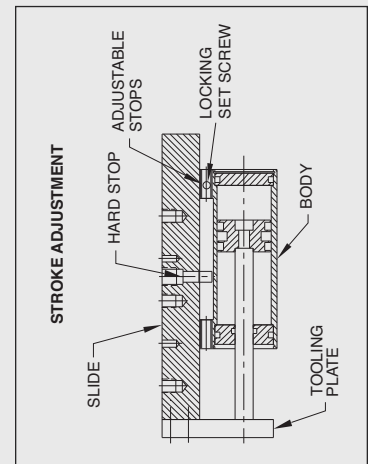
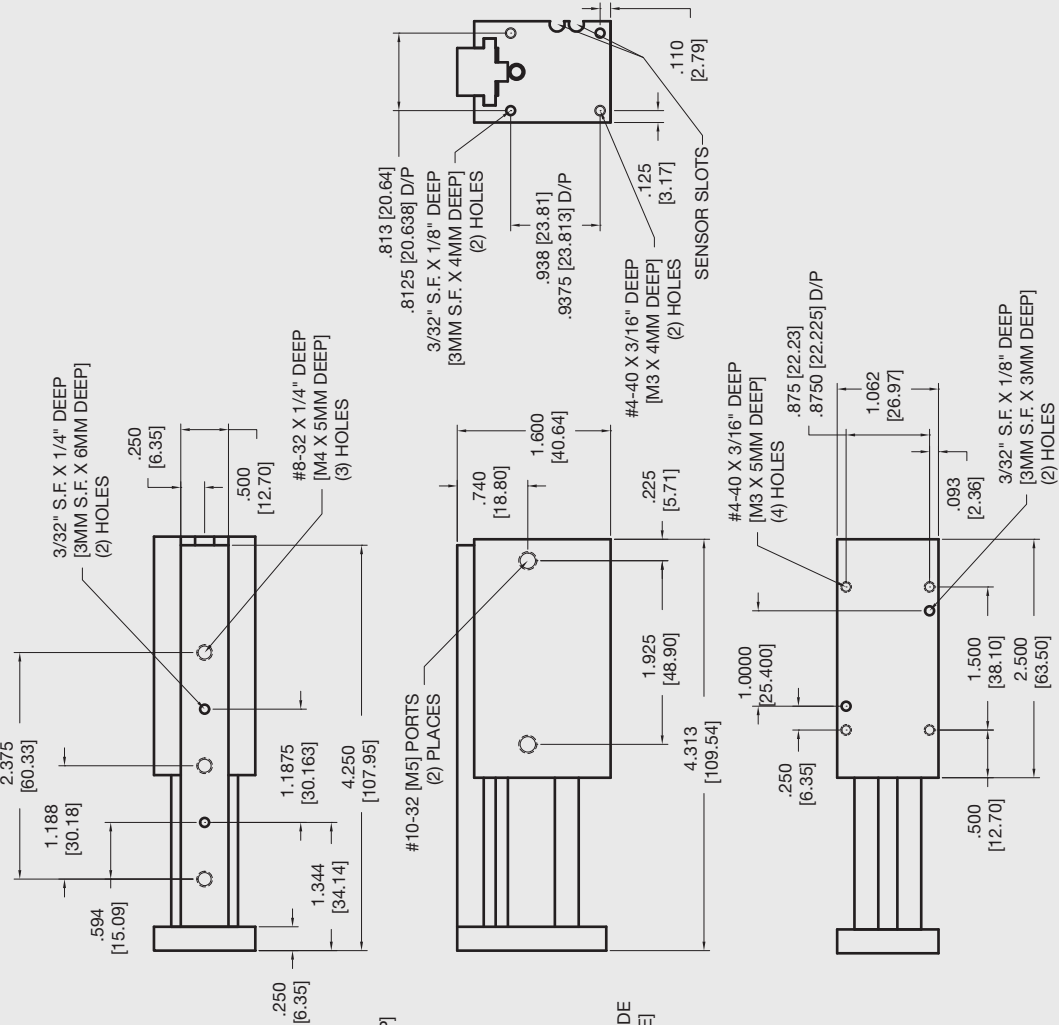
**SENSOR TYPE**  
1 = NPN  
2 = PNP

**AGMS-2-3 M - 3 - 1 - 1**

**SENSOR OPTIONS\***  
1 = LEFT  
2 = RIGHT  
3 = BOTH

**SENSOR CONNECTOR**  
1 = POTTED  
2 = QUICK DISCONNECT  
3 = QUICK DISCONNECT WITH RIGHT ANGLE

\* NOTE: Hall Effect sensors are hard wired with 20" pigtail.  
Sensor Part # SHN01, SHP01, SHNQ3, SHPQ3



**Unless noted, all tolerances are as indicated here:**



All Dowel Holes are SF (Slip Fit) Locational Tolerance ± .0005" [0.13mm]



Metric Threads Course Pitch

**Imperial:**  
Inch 0.00 = ±.01  
0.000 = ±.005  
0.0000 = ±.0005

**Metric:** [0.] = ±.25  
[0.0] = ±.13  
[0.00] = ±.013