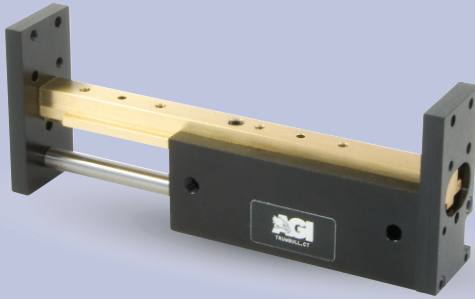




AGPS-1-4 Parallel Gripper

Single Finger, One Fixed Jaw

FEATURES AND BENEFITS



- T-Slot bearing support for the carriage and end plate offers superior load bearing performance throughout the stroke.
- Standard built-in stroke adjustment and stroke lock for precise, repetitive operation.
- Compact, lightweight unit with built-in cylinder.
- Piston seals are U-CUP type for long service life.
- Hall Effect sensors are available to monitor stroke position.
- Multiple mounting surfaces on the body and endplate with threaded and counterbored holes for easy mounting choices.
- Adjustable stroke on extend and retract.

SPECIFICATIONS

Design: Built-in air cylinder
T-slot slide

Stroke: 2.0 in [50.8 mm]

Thrust Force @ 80 PSI [5.5 BAR]

Extended: 15 lbs [66.7 N]
Retract: 13 lbs [57.8 N]

Recommended Speed: 2-12 in/sec [0.5-.3m/sec]

Pressure Range: Low/High 20-120 PSI [1.4-8 BAR]

Temperature Range: Low/High -20°/150°F [-28°/80°C]

Side Play: ± 0.001 [.03 mm]

Maximum Payload: 18 lbs [81.6 kg]

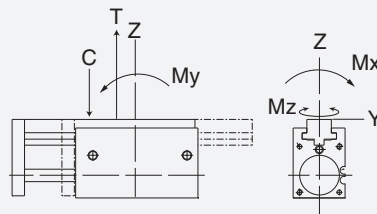
Material: High Strength, Aluminum Alloys, Bronze

Weight: 5 oz [142 g]

Piston Diameter: .50 in [12.7 mm]

January 2008 - PATENTED Made in the USA

MAXIMUM FORCES & MOMENTS



	Static	Dynamic
Max Tensile T	130 lbs [578 N]	55 lbs [244 N]
Max Compressive C	130 lbs [578 N]	55 lbs [244 N]
Max Moment M_x	110 in/lb [12.5 Nm]	50 in/lb [6.7 Nm]
Max Moment M_y	110 in/lb [12.5 Nm]	50 in/lb [6.7 Nm]
Max Moment M_z	110 in/lb [12.5 Nm]	50 in/lb [6.7 Nm]

HOW TO ORDER

When ordering, please specify:
Design/Model Number and Options.

DESIGN/MODEL

- AGPS-1-1
- AGPS-1-2
- AGPS-1-3
- AGPS-1-4

METRIC

AGPS-1-4

- SENSOR OPTIONS***
- 1 = LEFT
 - 2 = RIGHT
 - 3 = BOTH

SENSOR TYPE

- 1 = NPN
- 2 = PNP

- SENSOR CONNECTOR**
- 1 = POTTED
 - 2 = QUICK DISCONNECT
 - 3 = QUICK DISCONNECT WITH RIGHT ANGLE

* NOTE: Hall Effect sensors – Potted or Quick disconnect.
Sensor Part # SHN01, SHP01, SHNQ3, SHPQ3

