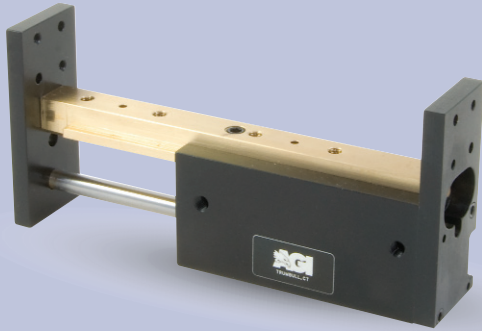




# AGPS-2-4 Parallel Gripper

## Single Finger, One Fixed Jaw



### FEATURES AND BENEFITS

- T-Slot bearing support for the carriage and end plate offers superior load bearing performance throughout the stroke.
- Standard built-in stroke adjustment and stroke lock for precise, repetitive operation.
- Compact, lightweight unit with built-in cylinder.
- Piston seals are U-CUP type for long service life.
- Standard built-in stroke adjustment and stroke lock for precise, repetitive operation.
- Hall Effect sensors are available to monitor stroke position.
- Multiple mounting surfaces on the body and endplate with threaded and counterbored holes for easy mounting choices.
- Adjustable stroke on extend and retract.

### SPECIFICATIONS

**Design:** Built-in air cylinder  
T-slot slide

**Stroke:** 2 in [50.8 mm]

**Thrust Force @ 80 PSI [5.5 BAR]**

Extended: 35 lbs [155 N]  
Retract: 33 lbs [146 N]

**Recommended Speed:** 2-12 in/sec [0.5-.3m/sec]

**Pressure Range:** Low/High 20-120 PSI [1.4-8 BAR]

**Temperature Range:** Low/High -20°/150°F [-28°/80°C]

**Side Play:** ± 0.001 [0.03 mm]

**Maximum Payload:** 30 lbs [13.6 kg]

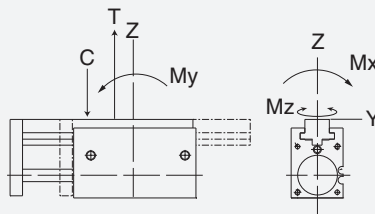
**Material:** High Strength, Aluminum Alloys, Bronze

**Weight:** 8.4 oz [240 g]

**Piston Diameter:** .750 in [19 mm]

January 2008 - PATENTED Made in the USA

### MAXIMUM FORCES & MOMENTS



	Static	Dynamic
Max Tensile T	250 lbs [1112 N]	108 lbs [800 N]
Max Compressive C	250 lbs [1112 N]	108 lbs [800 N]
Max Moment $M_x$	120 in/lb [8 Nm]	62 in/lb [7 Nm]
Max Moment $M_y$	120 in/lb [8 Nm]	62 in/lb [7 Nm]
Max Moment $M_z$	120 in/lb [8 Nm]	62 in/lb [7 Nm]

### HOW TO ORDER

When ordering, please specify:  
Design/Model Number and Options.

**DESIGN/MODEL**

- AGPS-2-1
- AGPS-2-2
- AGPS-2-3
- AGPS-2-4

**METRIC**

AGPS-2-4

**SENSOR TYPE**

- 1 = NPN
- 2 = PNP

M - 3 - 1 - 1

**SENSOR OPTIONS\***

- 1 = LEFT
- 2 = RIGHT
- 3 = BOTH

**SENSOR CONNECTOR**

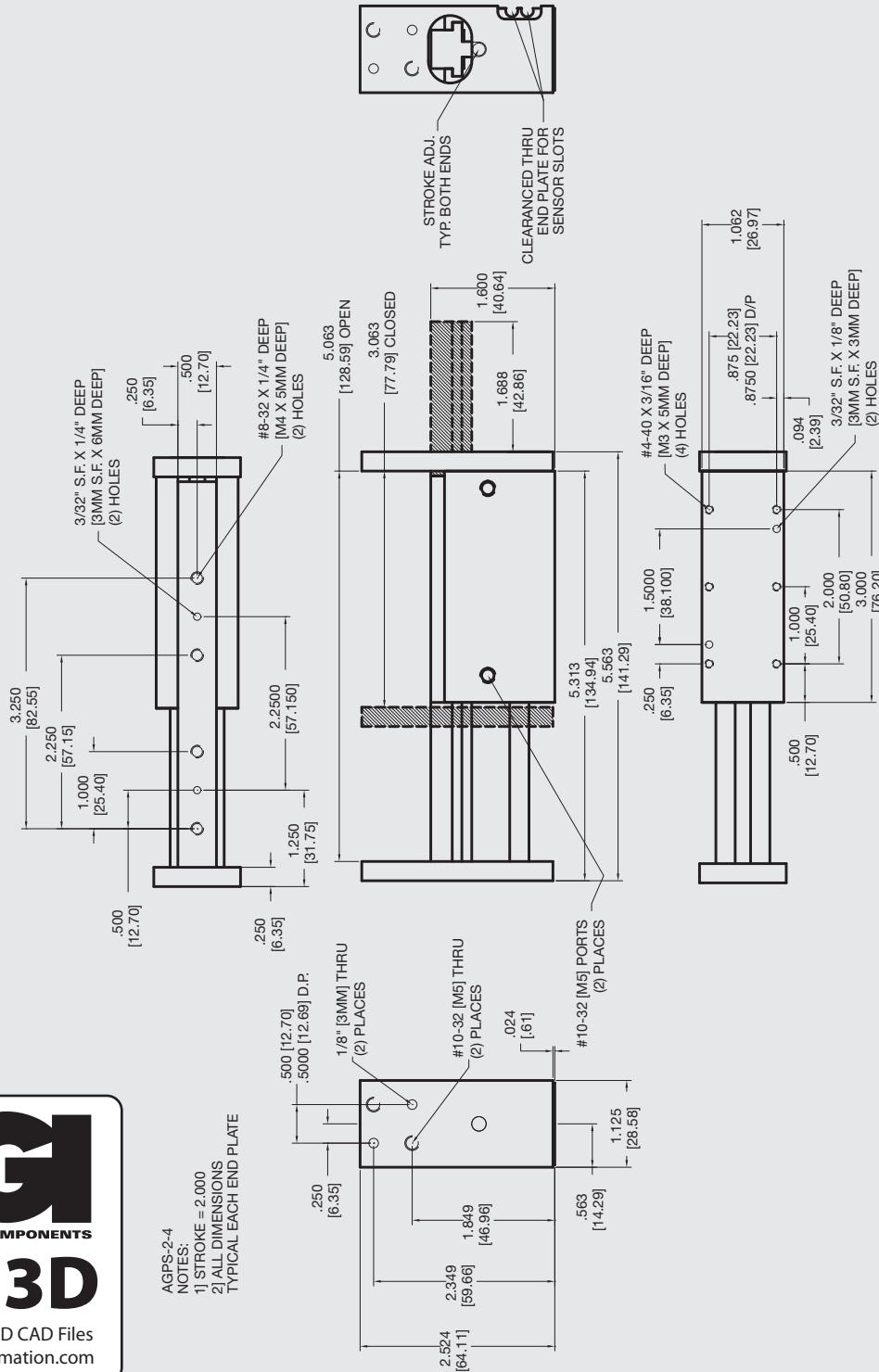
- 1 = POTTED
- 2 = QUICK DISCONNECT
- 3 = QUICK DISCONNECT WITH RIGHT ANGLE

\* NOTE: Hall Effect sensors are hard wired with 20" pigtail.

Sensor Part # SHN01, SHP01, SHNQ3, SHPQ3

# AGPS-2-4 Parallel Gripper

## Single Finger, One Fixed Jaw




**AGI**  
AUTOMATION COMPONENTS  
**2D & 3D**

Download 2D & 3D CAD Files  
@ [www.AGI-Automation.com](http://www.AGI-Automation.com)

AGPS-2-4  
NOTES:  
1) STROKE = 2.000  
2) ALL DIMENSIONS  
TYPICAL EACH END PLATE

**Unless noted, all tolerances are as indicated here:**



All Dowel Holes are SF (Slip Fit) Locational Tolerance ± .0005" [0.13mm]



Metric Threads Course Pitch

Imperial: 0.00 = ±.01  
Inch 0.000 = ±.005  
0.0000 = ±.0005

Metric: [0.] = ±.25  
[mm] [0.0] = ±.13  
[0.00] = ±.013