



AGPM-1 Parallel Gripper

Miniature T-Slot Bearing Series



FEATURES AND BENEFITS

- Jaws are T-Slot bearing supported to prevent jaw breakage and offer superior load bearing performance.
- High gripping force to weight ratio.
- True parallel jaw motion for easy tooling.
- Units are permanently lubricated for non-lube air operation, allowing for compliance with OSHA regulations.
- AGPM-1 is fully field repairable for cost savings and minimum down time.
- Wedge is guided in the body for precise center repeatability.
- Shielded design for long service life.
- Top porting allows unit to be manifolded, eliminating air fittings.
- Purge port on side of unit to evacuate any contaminants from inside for a clean room environment.
- Available in metric only.

SPECIFICATIONS

Design: Parallel, Double Acting, Synchronized Jaws

Stroke: 0.190 in [4.8 mm]

Gripping Force @ 80 PSI [5.5 BAR]

Closing: 9 lbs [40 N]

Opening: 9 lbs [40 N]

Time:

Close: 0.10 sec [0.10 sec]

Open: 0.10 sec [0.10 sec]

Pressure Range:

Low/High 10-100 PSI [.7-7 BAR]

Temperature Range:

Low/High -20°/180°F [-28°/80°C]

Side Play: ± 0.001 [.03 mm]

Repeatability from center:

±.002 [.06 mm]

Loading Capacity:

	Static	Dynamic
Max Tensile T	20 lbs	7 lbs
	[88 N]	[31 N]

Max Compressive C	20 lbs	7 lbs
	[88 N]	[31 N]

Max Moment M_x	12 in/lb	4 in/lb
	[1 Nm]	[.5 Nm]

Max Moment M_y	15 in/lb	5 in/lb
	[2 Nm]	[.6 Nm]

Max Moment M_z	12 in/lb	4 in/lb
	[1 Nm]	[.5 Nm]

Max Moment M_x	12 in/lb	4 in/lb
	[1 Nm]	[.5 Nm]

Max Moment M_y	15 in/lb	5 in/lb
	[2 Nm]	[.6 Nm]

Max Moment M_z	12 in/lb	4 in/lb
	[1 Nm]	[.5 Nm]

Max Moment M_x	12 in/lb	4 in/lb
	[1 Nm]	[.5 Nm]

Max Moment M_y	15 in/lb	5 in/lb
	[2 Nm]	[.6 Nm]

Max Moment M_z	12 in/lb	4 in/lb
	[1 Nm]	[.5 Nm]

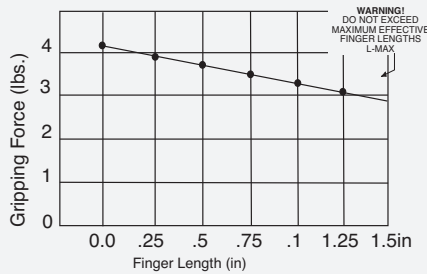
Material: High Strength, Hard Coated aluminum bronze alloys, Steel

Weight: 1.7 oz. [48.1 g]

Piston Diameter: .437 in [11 mm]

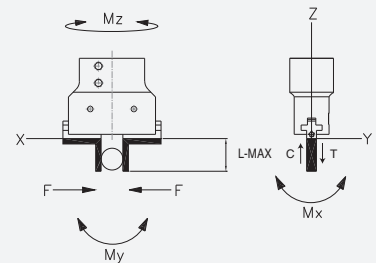
January 2009 - PATENTED Made in the USA

HOLDING FORCES CHART



WARNING! Do not exceed tooling jaw length. See Chart above.

LOADING INFORMATION



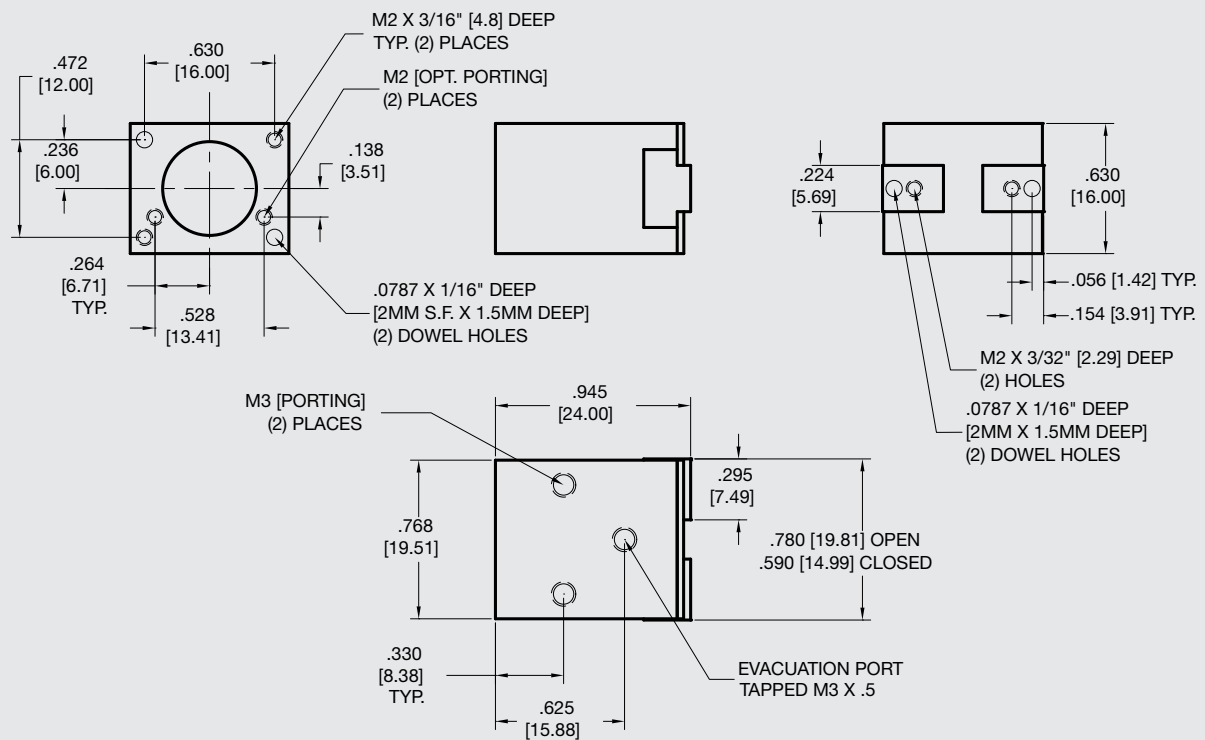
LOOK! More Technical specifications for sensors on "Sensors Accessories" page.

HOW TO ORDER

When ordering, please specify:
Design/Model Number and Options.

DESIGN/MODEL
AGPM-1

AGPM-1



Unless noted, all tolerances are as indicated here:



All Dowel Holes are SF (Slip Fit) Locational Tolerance $\pm .0005"$ [.013mm]



Metric Threads Course Pitch

Imperial:
Inch 0.00 = ± 0.01
0.000 = ± 0.005
0.0000 = ± 0.0005

Metric: [0.] = ± 0.25
[mm] [0.0] = ± 0.13
[0.00] = ± 0.13