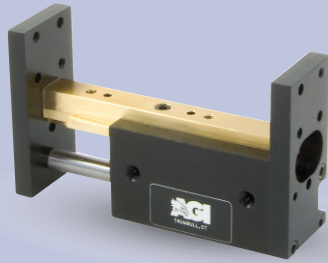


AGPS-1-2 Parallel Gripper

Single Finger, One Fixed Jaw



FEATURES AND BENEFITS

- T-Slot bearing support for the carriage and end plate offers superior load bearing performance throughout the stroke.
- Standard built-in stroke adjustment and stroke lock for precise, repetitive operation.
- Compact, lightweight unit with built-in cylinder.
- Piston seals are U-CUP type for long service life.
- Hall Effect sensors are available to monitor stroke position.
- Multiple mounting surfaces on the body and endplate with threaded and counterbored holes for easy mounting choices.
- Adjustable stroke on extend and retract.

SPECIFICATIONS

Design: Built-in air cylinder
T-slot slide

Stroke: 1 inch [25.4 mm]

Thrust Force @ 80 PSI [5.5 BAR]

Extended: 15 lbs [66.7 N]
Retract: 13 lbs [57.8 N]

Recommended Speed:

2-12 in/sec
[0.5-.3m/sec]

Pressure Range:

Low/High 20-120 PSI [1.4-8 BAR]

Temperature Range:

Low/High -20°/150°F [-28°/80°C]

Side Play:

± 0.001 [.03 mm]

Maximum Payload:

7 lbs [3.2 kg]

Material: High Strength, Aluminum Alloys,
Bronze

Weight:

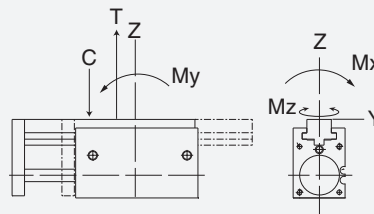
3.2 oz [90 g]

Piston Diameter:

.50 in [12.7 mm]

January 2008 - PATENTED Made in the USA

MAXIMUM FORCES & MOMENTS



| | Static | Dynamic |
|-------------------|----------------------|----------------------|
| Max Tensile T | 75 lbs [333 N] | 32 lbs [142 N] |
| Max Compressive C | 75 lbs [333 N] | 32 lbs [142 N] |
| Max Moment M_x | 60 in/lb [6.7 Nm] | 30 in/lb [3.4 Nm] |
| Max Moment M_y | 60 in/lb [6.7 Nm] | 30 in/lb [3.4 Nm] |
| Max Moment M_z | 60 in/lb [6.7 Nm] | 30 in/lb [3.4 Nm] |

HOW TO ORDER

When ordering, please specify:
Design/Model Number and Options.

DESIGN/MODEL

AGPS-1-1
AGPS-1-2
AGPS-1-3
AGPS-1-4

METRIC

AGPS-1-2

SENSOR TYPE

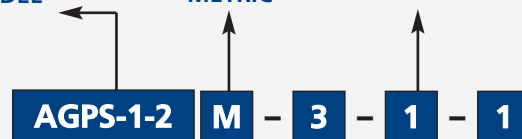
1 = NPN
2 = PNP

SENSOR CONNECTOR

1 = POTTED
2 = QUICK DISCONNECT
3 = QUICK DISCONNECT
WITH RIGHT ANGLE

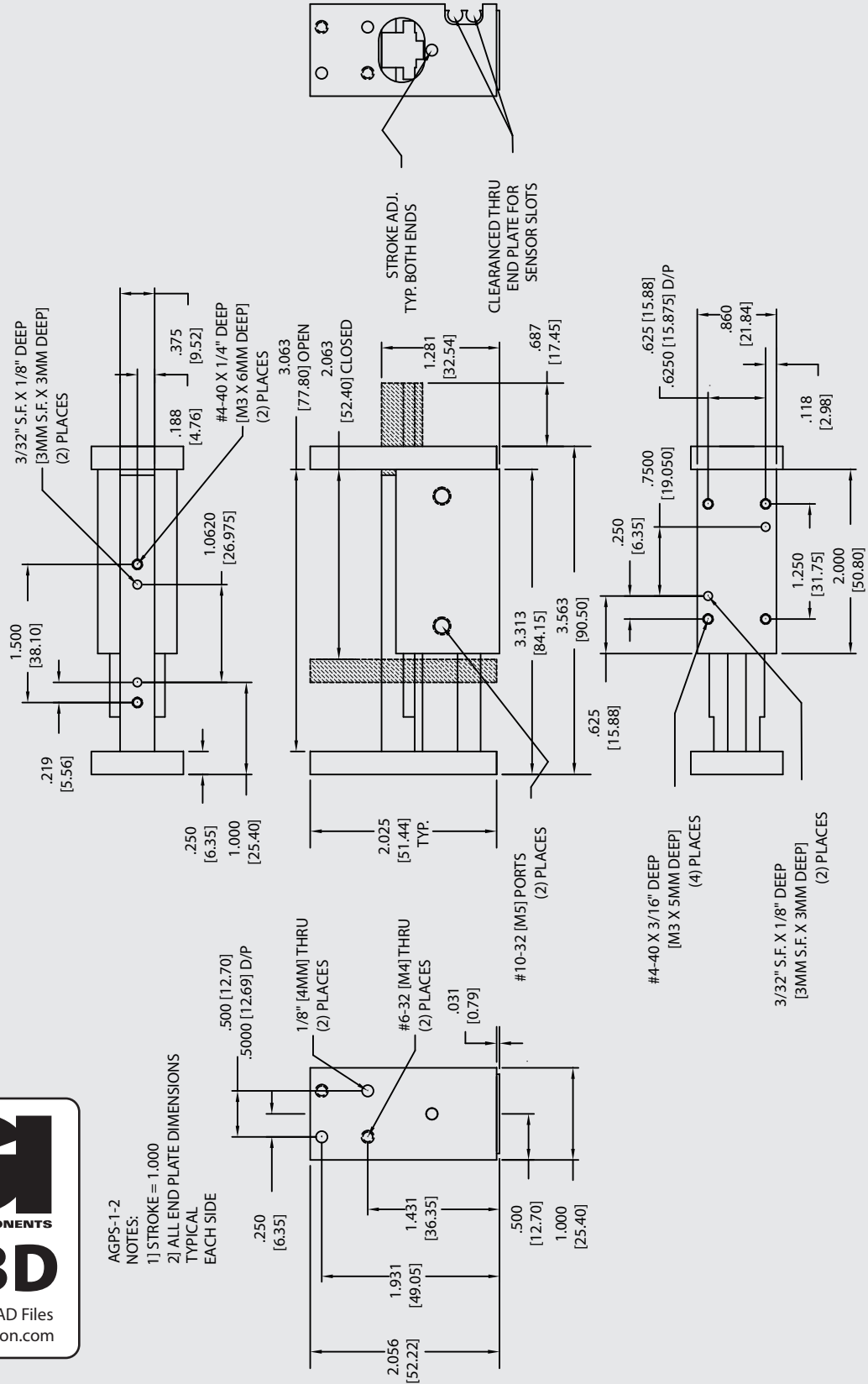
SENSOR OPTIONS*

1 = LEFT
2 = RIGHT
3 = BOTH



* NOTE: Hall Effect sensors – Potted or Quick disconnect.

Sensor Part # SHN01, SHP01, SHNQ3, SHPQ3





AGI
AUTOMATION COMPONENTS
2D & 3D

Download 2D & 3D CAD Files
@ www.AGI-Automation.com

AGPS-1-2
NOTES:
1) STROKE = 1.000
2) ALL END PLATE DIMENSIONS
TYPICAL
EACH SIDE

Unless noted, all tolerances are as indicated here:

 All Dowel Holes are SF (Slip Fit) Locational Tolerance ± .0005" [0.13mm]

 Metric Threads Course Pitch

| | | | |
|------------------|-----------------|----------------|----------------|
| Imperial: | 0.00 = ±.01 | Metric: | [0.] = ±.25 |
| Inch | 0.000 = ±.005 | [mm] | [0.0] = ±.13 |
| | 0.0000 = ±.0005 | | [0.00] = ±.013 |