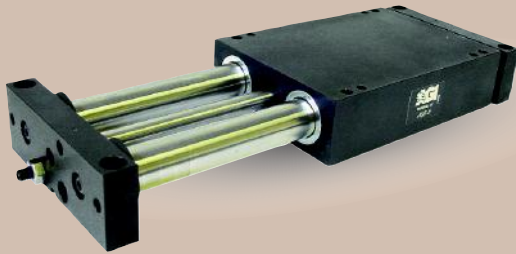


# AGS-6 Powered Slide

## Built-In Air Cylinder



### FEATURES AND BENEFITS

- Compact lightweight unit with built-in air cylinder.
- Linear ball bearings ride on precision hardened ground steel shafts.
- Units are permanently lubricated.
- Pistons seals are U-Cup type for long service life.
- Aluminum body and end blocks contain tapped holes and dowel pin holes for precision mounting or fixturing.
- Custom mounting holes and air ports can be added. Please consult factory.
- Main body or end blocks can be anchored due to the 1/16" height clearance.
- Standard built-in stroke adjustment for precise repetitive operation.
- Proximity switches are available to monitor end of stroke position of the body.
- Optional shock absorbers can be ordered for smooth operation.
- Series AGS is fully field repairable for cost savings and minimum down time. Repair kits are available for repairs or maintenance.

### SPECIFICATIONS: AGS-6

**Design:** Built-in air cylinder, linear bearings on steel hardened shafts

**Stroke:** 1-6 in

**Thrust Force @ 80 PSI [5.5 BAR]**

80 lbs [355 N]

**Recommended Speed:**

2-14 in/sec  
[0.5-.35 m/sec]

**Pressure Range:**  
Low/High

20-120 PSI [1.4-8 BAR]

**Temperature Range:**

Low/High -20°/150°F [-28°/80°C]

**Side Play:**

± 0.001 [0.03 mm]

**Maximum Payload:** 100 lbs [45.3 kg]

**Material:** High Strength, Aluminum Alloys, Steel Components

**Weight:**

12 lbs [5.5 kg]

**Piston Diameter:**

1.25 in [31.7 mm]

### SPECIFICATIONS: AGS-6-X

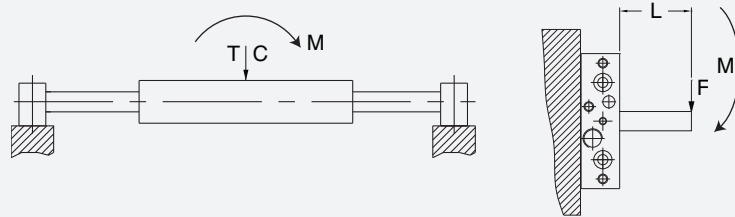
**Custom Stroke:** X= 0 to 6 in [152 mm]

**All Other Specifications:** Same As Above

### PAYLOAD DATA

Max Tensile T	220 lbs [980 N]
Max Compressive C	220 lbs [980 N]
Max Moment $M_x$	1000 in/lb [113 Nm]
Max Moment $M_y$	1000 in/lb [113 Nm]
Max Moment $M_z$	1000 in/lb [113 Nm]

Deflection @ Max load 0.003  
Maximum Payload (100 lbs)  
Recommended load for smooth operation.



### HOW TO ORDER

**When ordering, please specify:**  
Design/Model Number and Options.

**DESIGN/MODEL**

AGS-4  
AGS-5  
AGS-6

**SENSOR OPTIONS**

1 = LEFT  
2 = RIGHT  
3 = BOTH

**SENSOR TYPE\***

1 = NPN  
2 = PNP

**SHOCK ABSORBERS**

**AGS-6 M - 6 - 3 - 1 - 1 - S**

**TYPE**  
M = METRIC  
= IMPERIAL

AGS-4 STROKE (1", 2", 3", 4")  
AGS-5 STROKE (1", 2", 3", 4", 5")  
AGS-6 STROKE (1", 2", 3", 4", 5", 6")

**SENSOR CONNECTOR**

1 = POTTED  
2 = QUICK DISCONNECT  
3 = QUICK DISCONNECT WITH RIGHT ANGLE

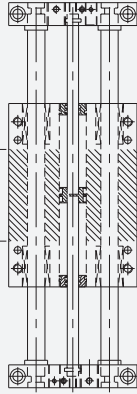
\* NOTE: Proximity sensors are 8 mm diam., 12-30 VDC, 50 mA and come with 2 meter cable.

**Sensor Part # SNC08, SNQ08, SPC08, SPQ08**

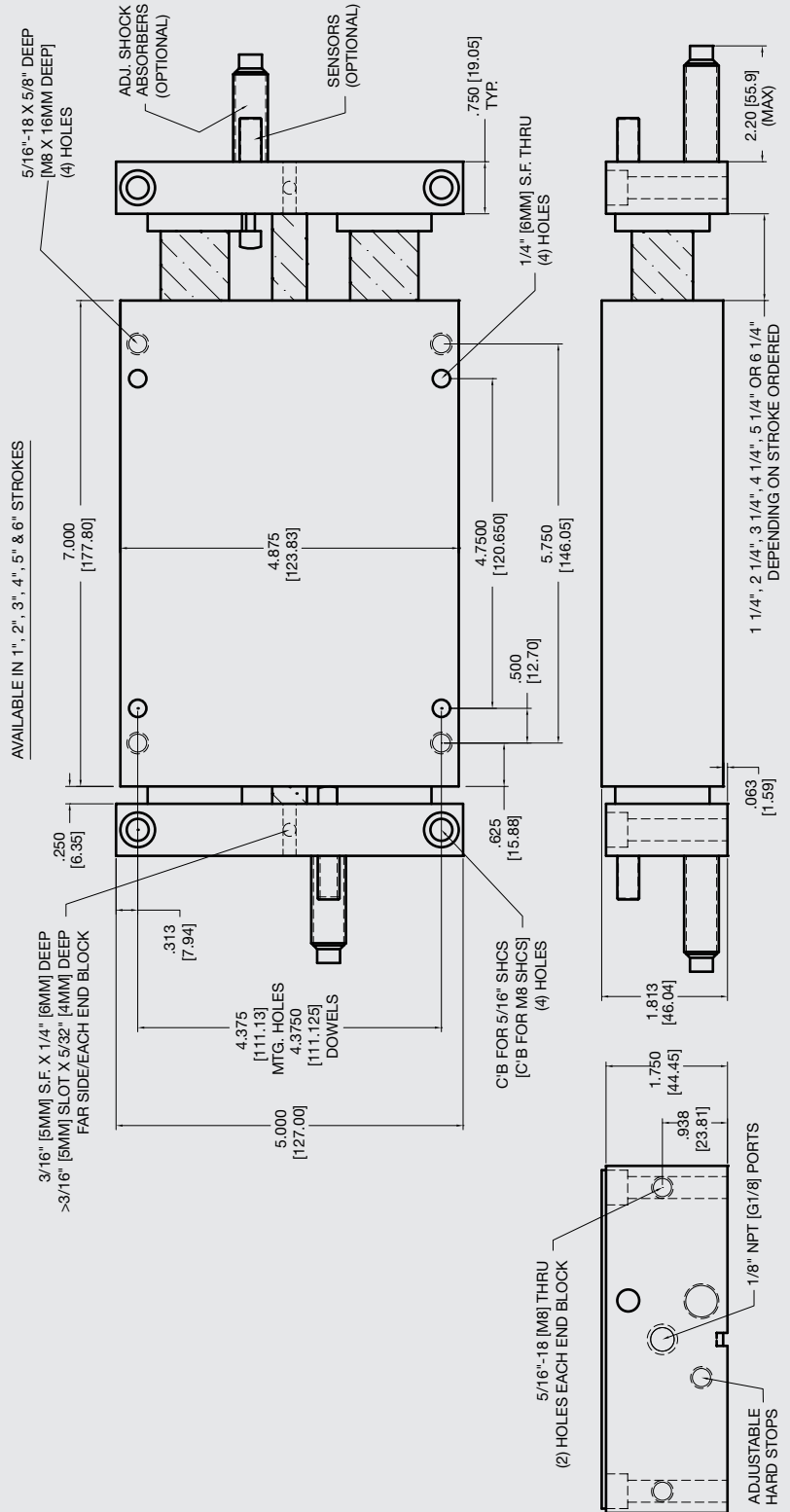
January 2009 - PATENTED Made in the USA

### CUSTOM MOUNTING AREA

**NOTE:** The end blocks and body can be drilled and tapped from top of back side.  
 Shaded area available for custom drilling and tapping.  
 For drilling and tapping end blocks, please consult the factory.



**WARNING!** Do not exceed mounting screw depth. LOOK! More Technical specifications for sensors on "Sensors Accessories" page.



Download 2D & 3D CAD Files  
 @ www.AGI-Automation.com

**Unless noted, all tolerances are as indicated here:**



All Dowel Holes are SF (Slip Fit) Locational Tolerance ± .0005" [.013mm]



Metric Threads Course Pitch

**Imperial:**  
 Inch 0.00 = ±.01  
 0.000 = ±.005  
 0.0000 = ±.0005

**Metric:** [0.] = ±.25  
 [mm] [0.0] = ±.13  
 [0.00] = ±.013