



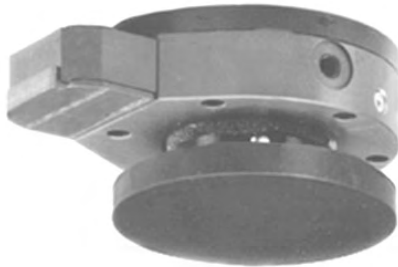
LOAD LIMITER

LOW PROFILE - VARIABLE TRIP POINTS

AGO-I

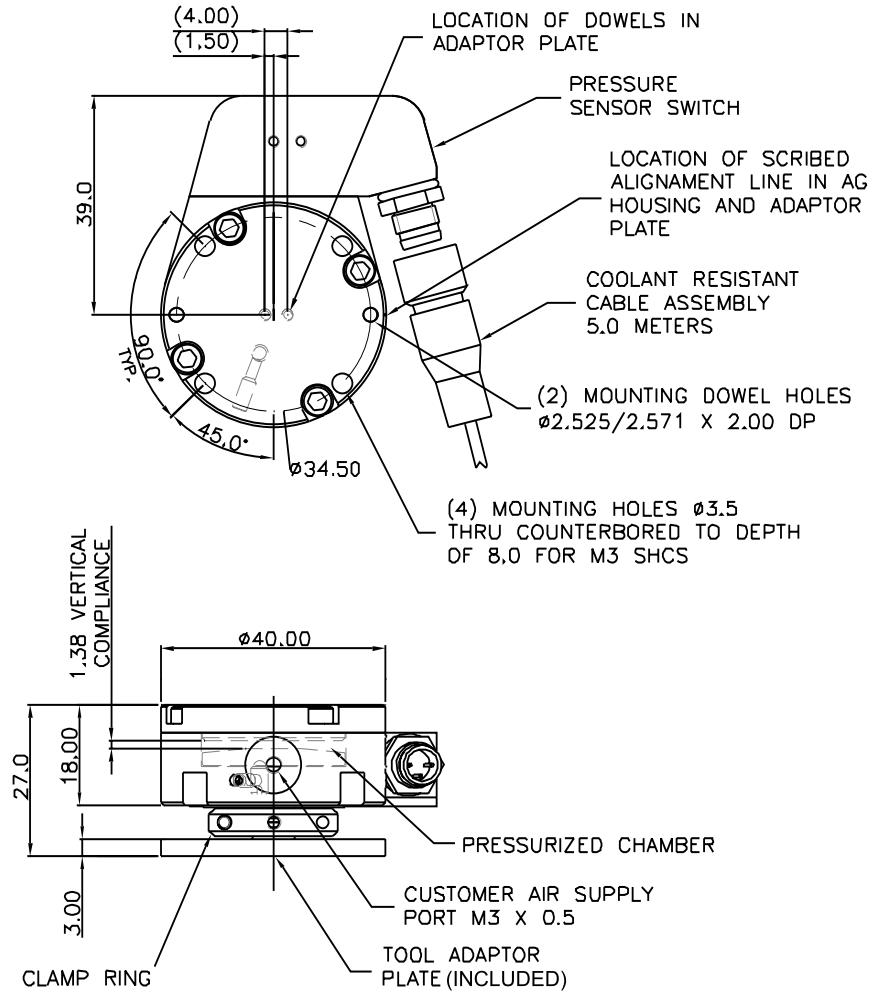
Download 2 & 3D CAD Drawings:
www.AGI-AUTOMATION.com

DIMENSIONAL DRAWING



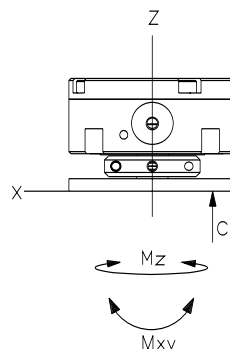
SPECIFICATIONS

- Design** Non-resistive compliancy upon impact
- Rotation Range** 360° unlimited torsional rotation
- Torque** (Continuously Variable)
 - Max. Breakaway Mom. M_x .. 13.2 in-lb
 - Max. Breakaway Mom. M_y .. 13.2 in-lb
 - Max. Breakaway Mom. M_z .. 13.5 in-lb
 - Min/Max Breakaway
 - Compressive C 0.7/40 lb
- Avg. Response Time** ... 4 - 7 ms
- Pressure Range**
 - Low 14 psi
 - High 90 psi
- Temperature Range**
 - Low -32° F
 - High 158° F
- Repeatability**
 - X and Y..... ± 0.001 in
 - Z ± 0.001 in
 - Rotational ± 0.028°
- Compliance Angle**
 - (x,y) ± 5°
- Axial Compliance (Z+)** .. ± 0.054 in
- Switch Description** 3 amps; 24 VDC; High-reliability aircraft snap acting type
- Material** High-strength; Hard-coated aluminum alloys; Stainless Steel
- Weight** 7 oz

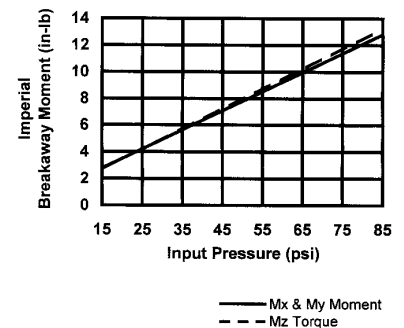


NOTE: Dimensions are metric.

LOADING INFORMATION



BREAKAWAY MOMENT



TO ORDER OR FOR MORE INFORMATION, PLEASE CALL (203) 459-8345, FAX (203) 452-5943
 VISIT OUR WEBSITE AT: WWW.AGI-AUTOMATION.COM

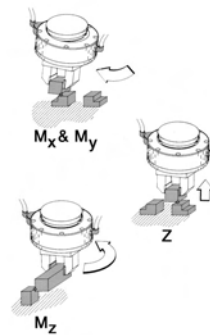
AGO LOAD LIMITER SERIES

LOW-PROFILE - VARIABLE TRIP POINTS

OPERATING PRINCIPLE

The *AGO Load Limiter* is a dynamically variable load limiter that operates on an air pressure system. A regulated air supply provides positive, variable pressure to hold the load limiter rigid during normal operation. At impact, the air chamber seal is opened, while the shutdown signal is immediately sent to the system controller.

With the *AGO Load Limiter*, production and assembly lines run longer, expensive robots and tooling are protected and costly system repairs are drastically reduced.



FEATURES AND BENEFITS

• Dynamically Variable Trip Points

Use air regulator to adjust the break-away moment. Being able to program your collision sensor offers protection at all speeds of an operation. The breakaway threshold adjusts to match the working force ranges of your robot/application.

• High Reliability

All AGO Load Limiter models feature a non-compressive, metal to metal seal which ensures reliable and consistent operation, giving you the permanent reliability you need and expect. Precise locating components are used to ensure

that the Load Limiter repeats back to its original position with less than 0.001 inches.

• Quick Reaction Time

At the moment of impact, the AGO air chamber seal is opened and a shutdown signal is instantly sent to the system controller. No reaction time is lost waiting for a deflection to occur - another advantage of an air pressure system.

• Monitors Performance Readiness

AGO units can only be pressurized when reset in one unique position. The

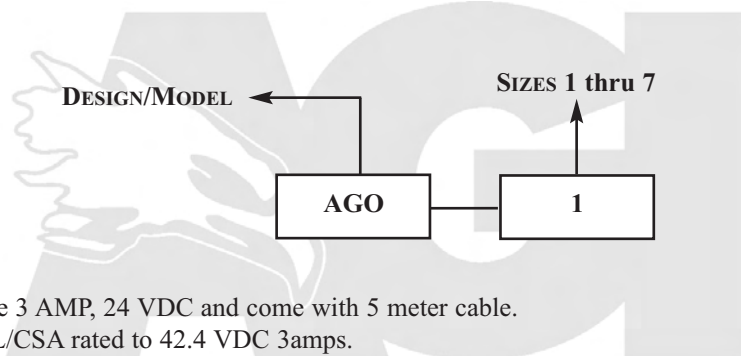
pressure switch monitor confirms that air pressure is present before resuming operation. The ready-to-perform signal from the pressure switch lets you know the AGO is reset in the proper position and pressurized. You will never receive a false readiness signal with an AGO unit.

• Load Limiter Becomes Compliant

Non-resistive compliancy upon impact offers better tool protection. The AGO Load Limiter removes the force from your tool and robot wrist. Large rotational and axial compliance during a crash prevents damage.

HOW TO ORDER

When ordering, please specify: Design/Model, Size and Options.



*NOTE: Pressure sensors are 3 AMP, 24 VDC and come with 5 meter cable. Aircraft snap acting type, UL/CSA rated to 42.4 VDC 3amps.

CONTACT INFORMATION

AGI AUTOMATION, INC.
171 Spring Hill Road, Trumbull, CT 06611
Tel: (203) 459-8345 • Fax: (203) 452-5943 • Email: amerigrip@aol.com
www.agi-automation.com