



# AGT-2 Powered Slide Linear Thruster



## FEATURES AND BENEFITS

- Floating piston rod coupling eliminates cylinder binding.
- Compact, lightweight unit with replaceable air-cylinder.
- Units are permanently lubricated.
- Optional stroke adjustment for precise, repetitive operation.
- Proximity switches are available to monitor end of stroke position of the body.
- Optional shock absorbers can be ordered for smooth operation.
- Aluminum body end blocks contain taped holes and dowel pin holes for precision mounting or fixturing.
- Standard end plate to stop shaft vibrations.

## SPECIFICATIONS

**Design:** Replaceable air cylinder, linear bearings on steel hardened shafts

**Stroke:** 4 in max. (1" increments)  
[100 mm] [25.4 mm]

**Thrust Force @ 80 PSI [5.5 BAR]**

30 lbs (multiply force factor by input pressure in PSI)

**Extended:** 20 lbs [89 N]

**Retract:** 19 lbs [85 N]

**Recommended Speed:**

1-40 in/sec

**Pressure Range:**

Low/High 20-120 PSI [1.4-8 BAR]

**Temperature Range:**

Low/High -20°/150°F [-28°/80°C]

**Side Play:** ± 0.001 [0.03 mm]

**Deflection:** See Chart

**Maximum Payload:** 5 lbs [2.2 kg]

**Material:** High Strength, Aluminum Alloys, Steel Components

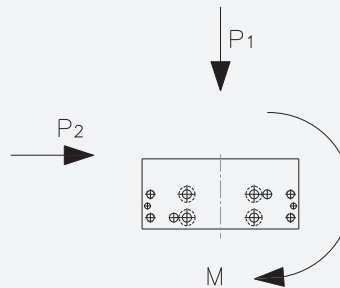
**Weight:** 0.50 lbs + 0.05 lb/in  
[0.23 kg + 0.86 g/mm]

**Shaft Diameter:** 3/16 in [5 mm]

**Piston Diameter:** 9/16 in [14 mm]

January 2009 - PATENTED Made in the USA

## PAYLOAD FORCES

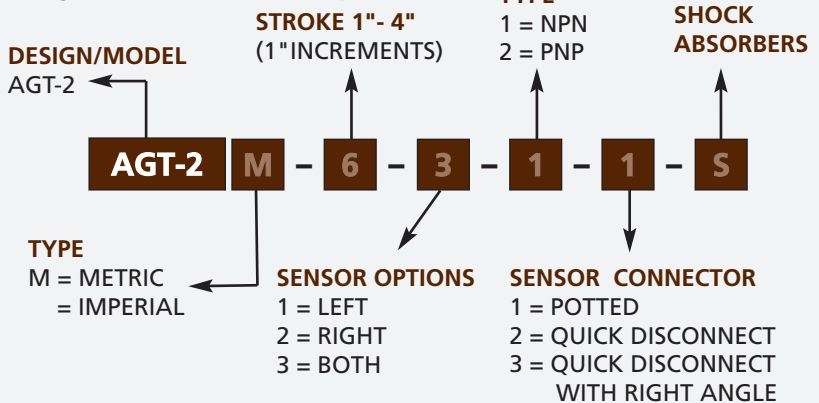


**WARNING!** Do not exceed mounting screw depth.

**LOOK!** More Technical specifications for sensors on "Sensors Accessories" page.

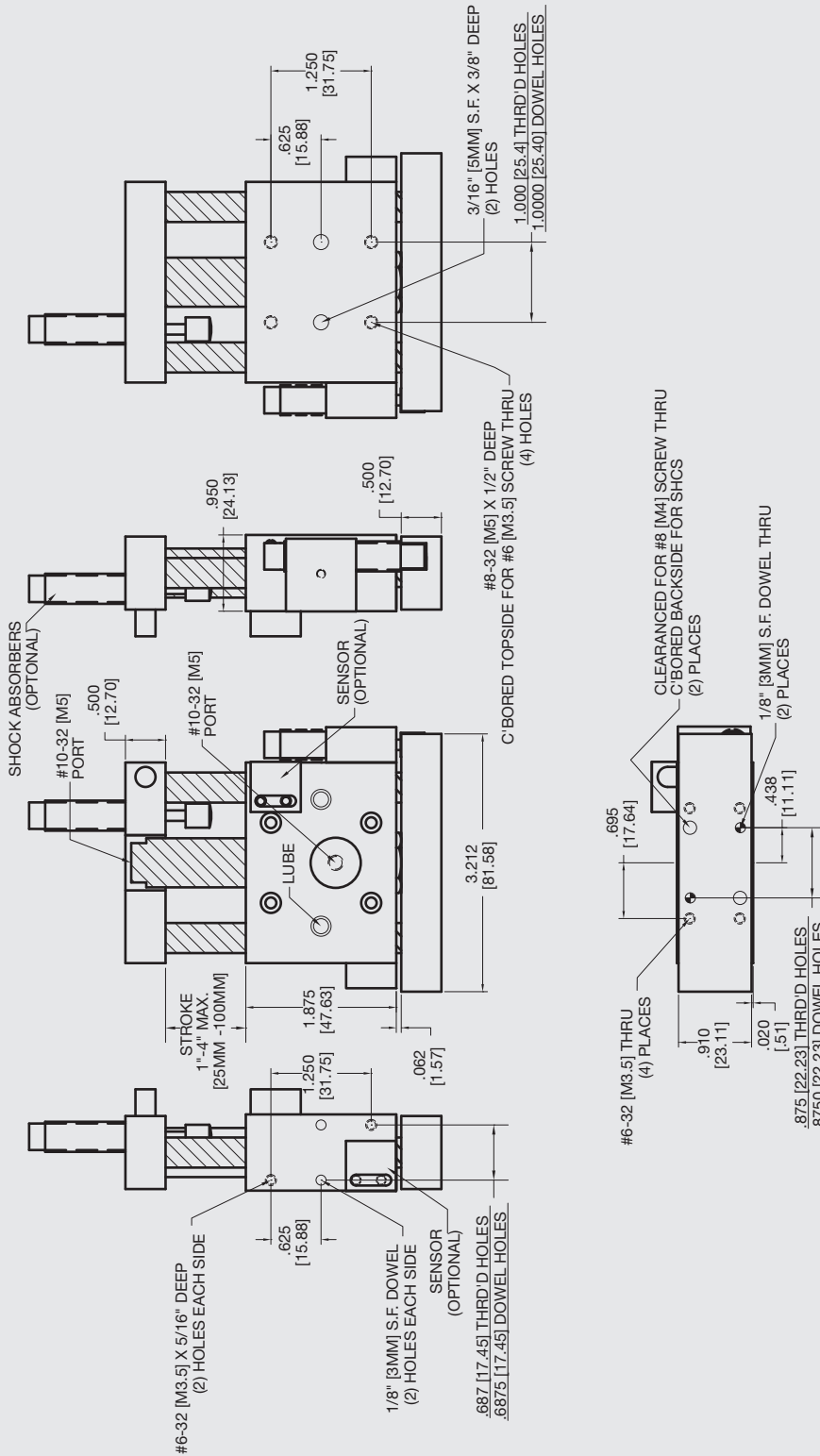
## HOW TO ORDER

When ordering, please specify:  
Design/Model Number and Options.



\* NOTE: Proximity sensors are 8 mm diam., 12-30 VDC, 50 mA and come with 2 meter cable.

Sensor Part # SNC08, SNQ08, SPC08, SPQ08



### PAYLOAD DATA

Stroke Length	Maximum Load (lbs)	Maximum Moments (in-lbs)	Maximum Deflection	
			P1	P2
1 [25.4 mm]	5 [2.3 kg]	14 [1.6 Nm]	.001 [.03 mm]	.001 [.03 mm]
2 [50.8 mm]	5 [2.3 kg]	10 [1.1 Nm]	.001 [.03 mm]	.001 [.03 mm]
3 [76.2 mm]	5 [2.3 kg]	8 [0.9 Nm]	.002 [.05 mm]	.002 [.05 mm]
4 [101.6 mm]	5 [2.3 kg]	6 [0.7 Nm]	.005 [.13 mm]	.004 [.10 mm]



Download 2D & 3D CAD Files  
@ [www.AGI-Automation.com](http://www.AGI-Automation.com)

**Unless noted, all tolerances are as indicated here:**

 All Dowel Holes are SF (Slip Fit) Locational Tolerance ± .0005" [.013mm]

 Metric Threads Course Pitch

**Imperial:** 0.00 = ±.01  
0.000 = ±.005  
0.0000 = ±.0005

**Metric:** [0.] = ±.25  
[0.0] = ±.13  
[0.00] = ±.013