



AGLP-12 Parallel Gripper

T-Slot Bearing Series, Low Profile

FEATURES AND BENEFITS



- Jaws are T-Slot bearing supported to prevent jaw breakage and offer superior load bearing performance.
- Rugged rack and pinion synchronizing.
- High gripping force to weight ratio.
- Compact design with long stroke.
- True parallel jaw motion for easy tooling.
- Units are permanently lubricated for non-lube air operation, allowing for compliance with OSHA regulations.
- Hall effect sensors are available to monitor open and closed position of the jaws.
- AGLP is fully field repairable for cost savings and minimum down time

SPECIFICATIONS

Design: Parallel, Double Acting, Synchronized Jaws

Stroke: 1.0, 1.5, 2.0 in [00.0 mm]

Gripping Force @ 80 PSI [5.5 BAR]

Closing: 80 lbs [356 N]
 Opening: 80 lbs [356 N]

Time:

Close: 0.25 sec [0.00 sec]
 Open: 0.25 sec [0.00 sec]

Pressure Range:

Low/High 10-120 PSI [.7-7 BAR]

Temperature Range:

Low/High -20°/ 180°F [-28°/ 80°C]

Side Play: ±0.000 [.00mm]

Loading Capacity:

	Static	Dynamic
Max Tensile T	225 lbs [1001 N]	75 lbs [334 N]
Max Compressive C	225 lbs [1001N]	75 lbs [334 N]
Max Moment M_x	570 in/lb [0.0 Nm]	190 in/lb [0.0 Nm]
Max Moment M_y	685 in/lb [0.0 Nm]	228 in/lb [0.0 Nm]
Max Moment M_z	570 in/lb [0.0 Nm]	190 in/lb [0.0Nm]

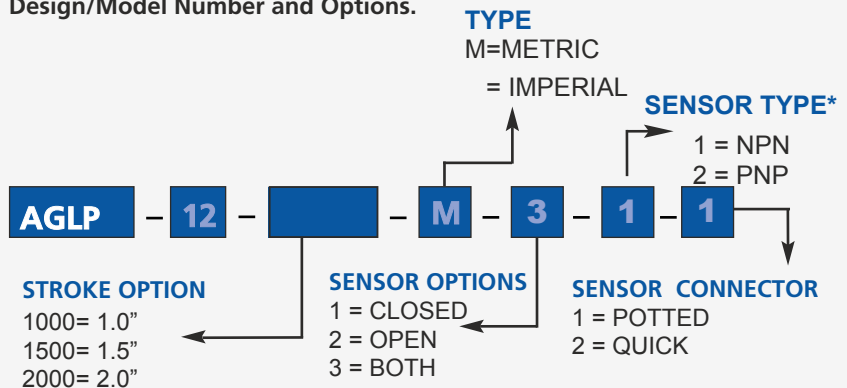
Material: High Strength, Hard Coated aluminum bronze alloys, Steel

Weight: 5 lbs [2.26 KG]

Piston Diameter: 0.000 in [00.0 mm]

HOW TO ORDER

When ordering, please specify:
 Design/Model Number and Options.



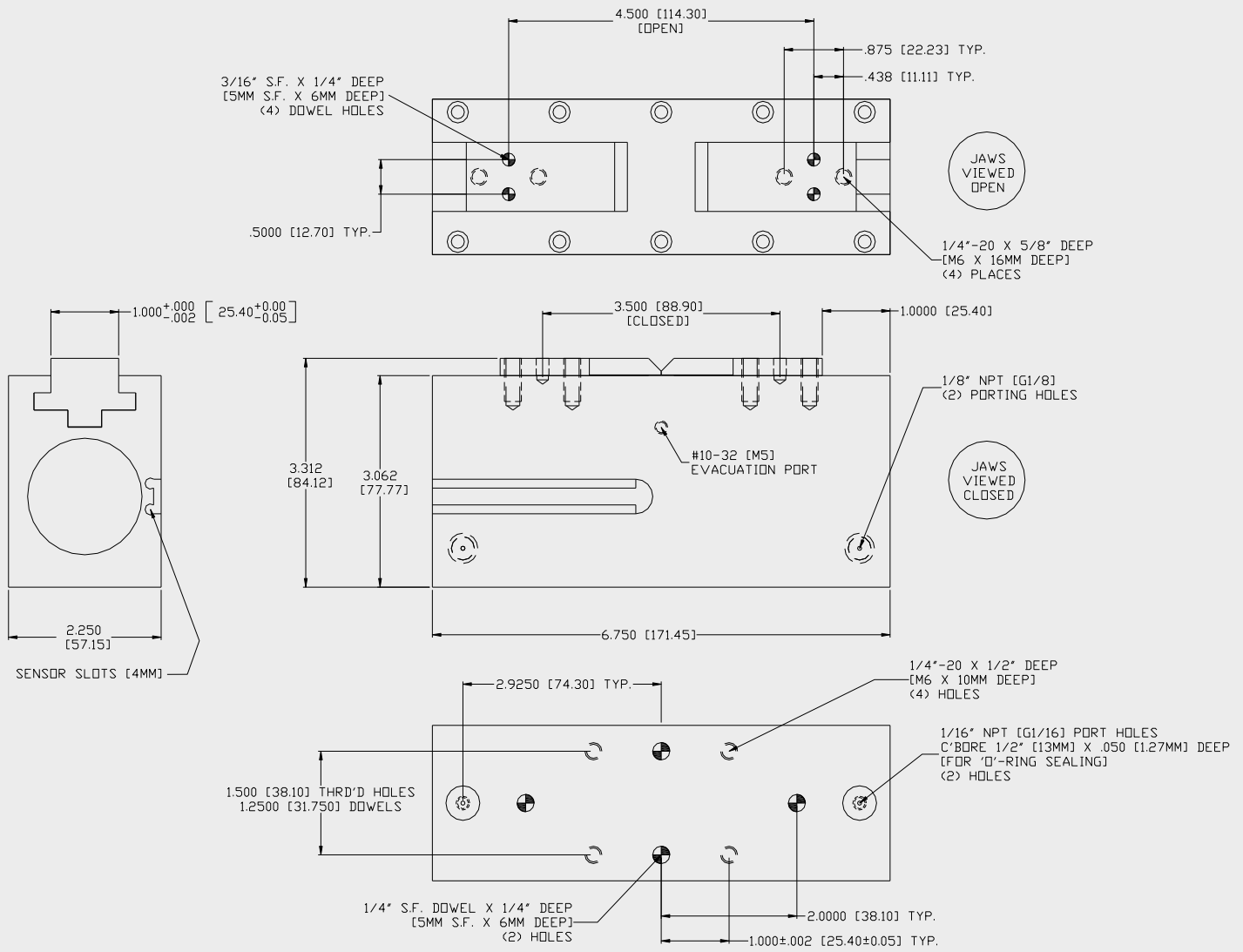
* NOTE: Hall Effect 4mm dia., 5-24 VDC, 22 mA and comes with 2 meter cable or quick disc.

Sensor Part # SHN01, SHN03, SHP01, SHP03

January 2009 - PATENTED Made in the USA

AGLP-12-1000 Parallel Gripper

T-Slot Bearing Series, Low Profile



Unless noted, all tolerances are as indicated here:



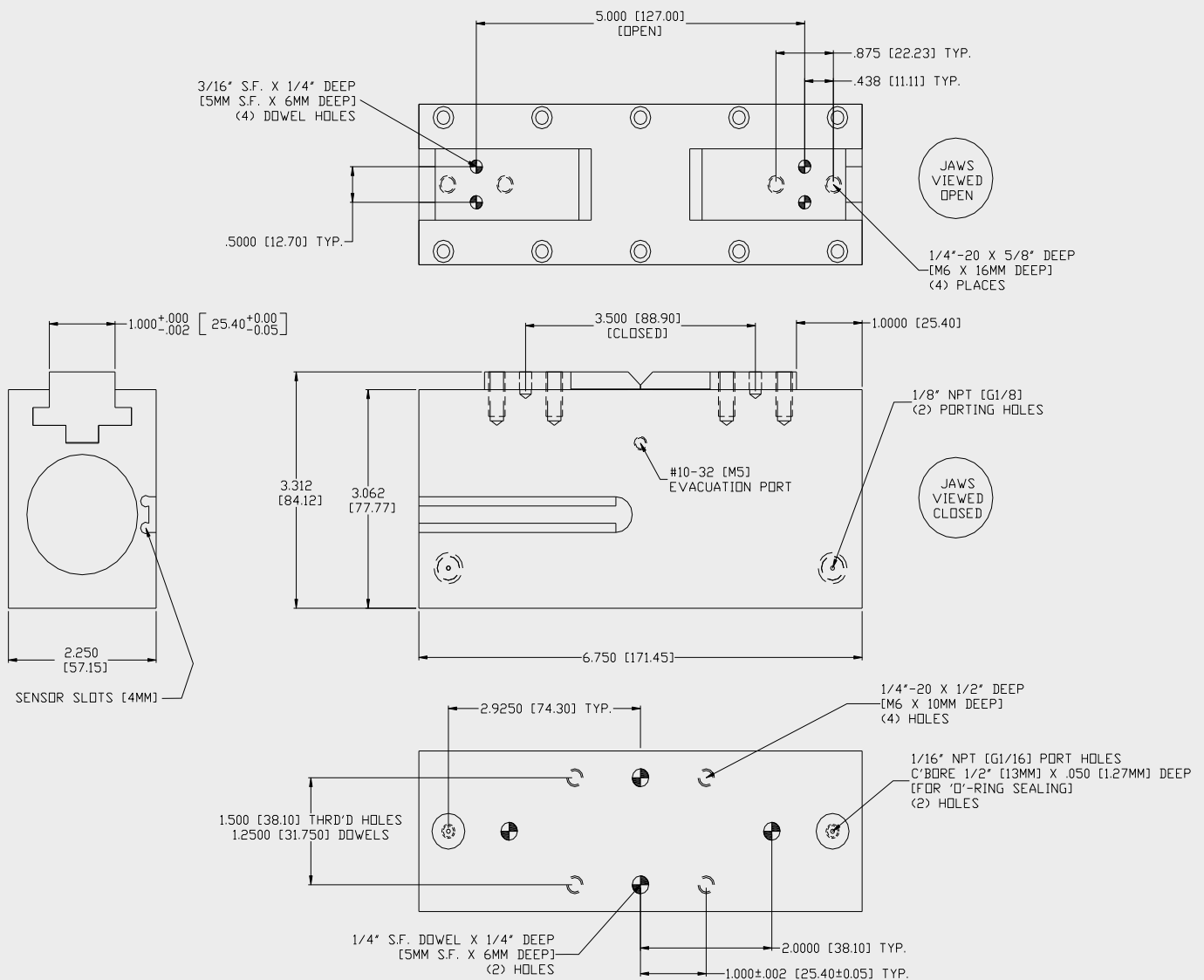
All Dowel Holes are SF (Slip Fit) Locational Tolerance ± .0005" [.013mm]



Metric Threads Course Pitch

Imperial:
Inch 0.00 = ±.01
0.000 = ±.005
0.0000 = ±.0005

Metric: [0.] = ±.25
[0.0] = ±.13
[0.00] = ±.013



Unless noted, all tolerances are as indicated here:



All Dowel Holes are SF (Slip Fit) Locational Tolerance ± .0005" [.013mm]



Metric Threads Course Pitch

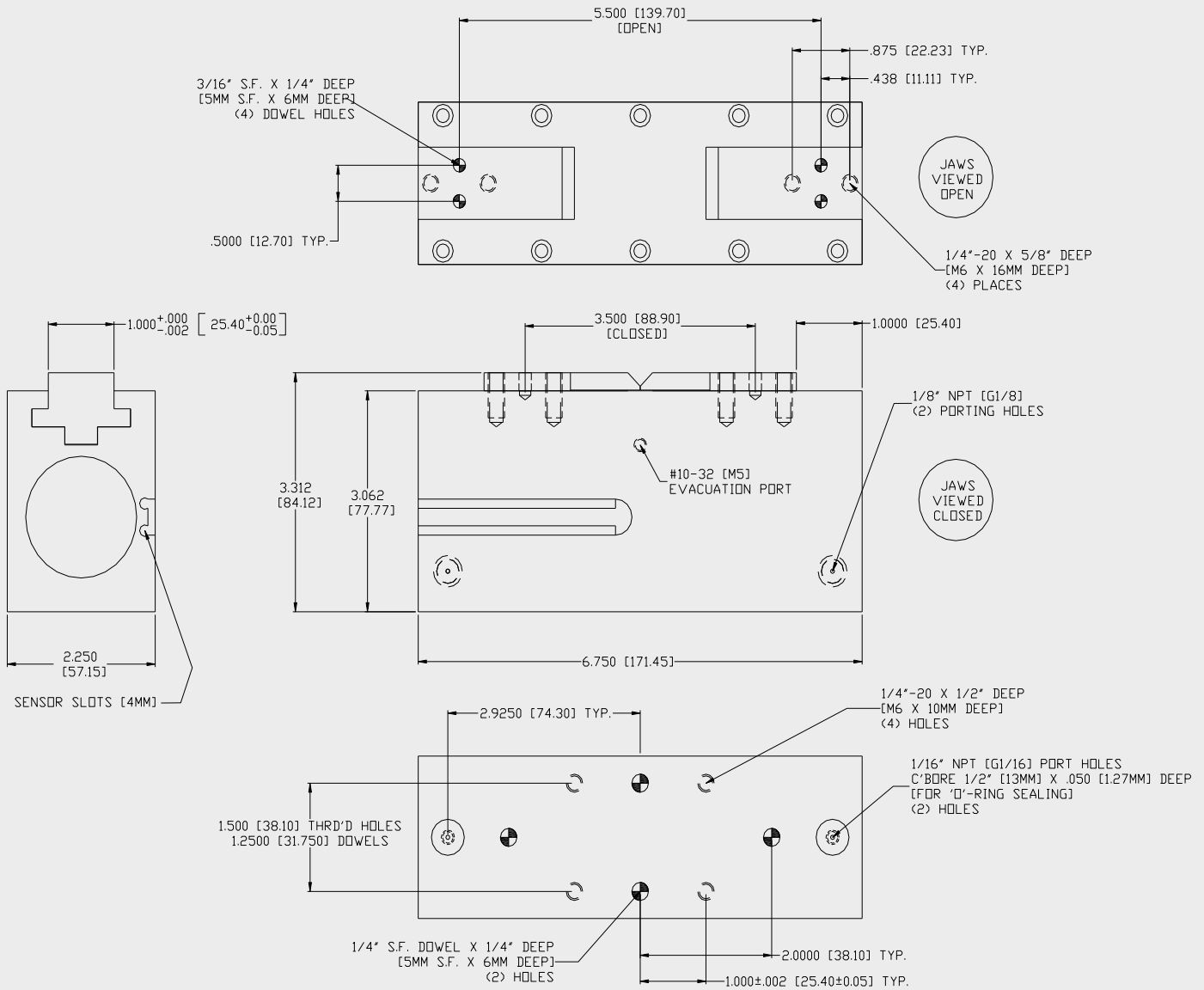
Imperial:
Inch

0.00 = ±.01
0.000 = ±.005
0.0000 = ±.0005

Metric:
[mm]
[0.] = ±.25
[0.0] = ±.13
[0.00] = ±.013

AGLP-12-2000 Parallel Gripper

T-Slot Bearing Series, Low Profile



Unless noted, all tolerances are as indicated here:



All Dowel Holes are SF (Slip Fit) Locational Tolerance ± .0005" [.013mm]



Metric Threads Course Pitch

Imperial:
Inch 0.00 = ±.01
0.000 = ±.005
0.0000 = ±.0005

Metric: [0.] = ±.25
[mm] [0.0] = ±.13
[0.00] = ±.013