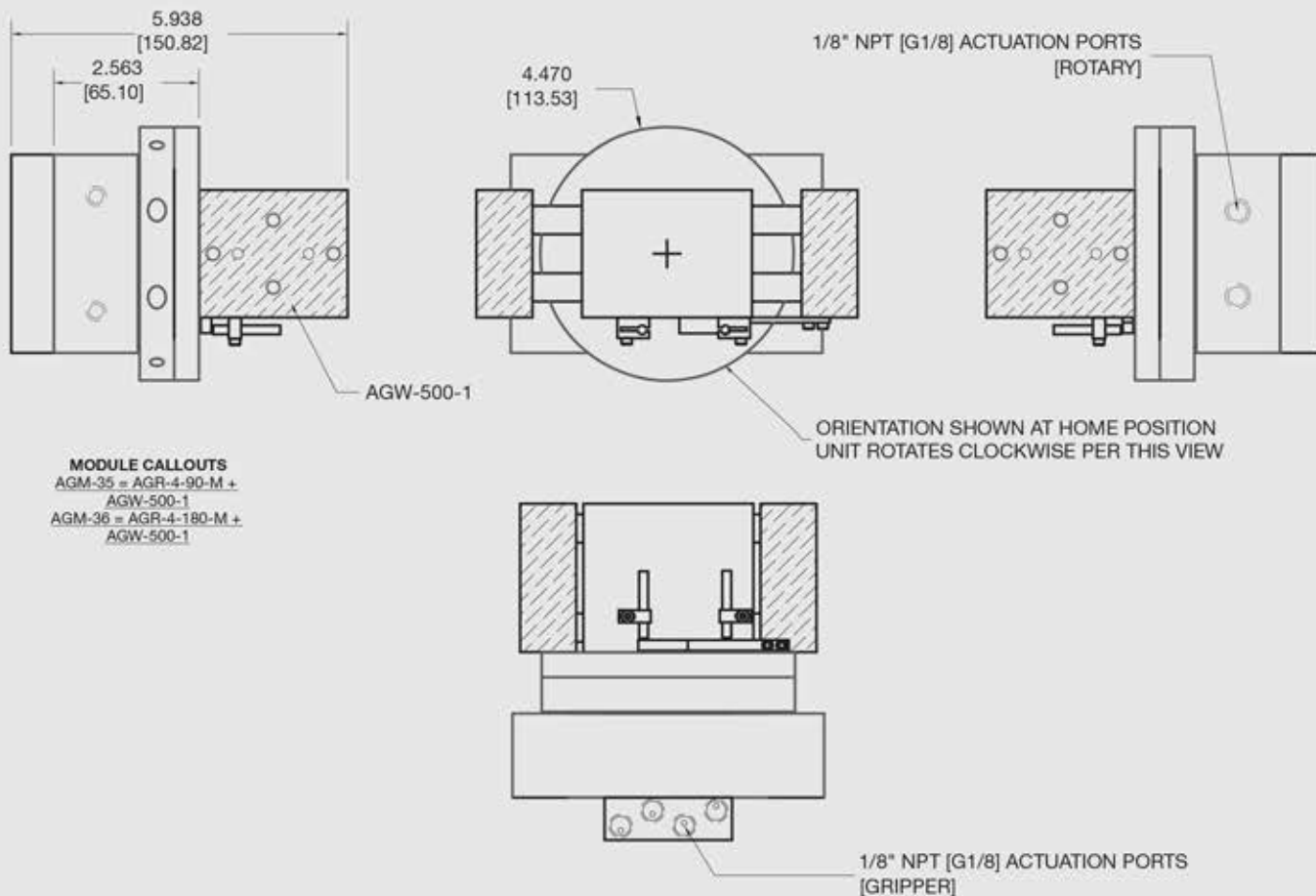


## MODULE CALLOUTS

AGM-35 = AGR-4-90° + AGW-500-1

AGM-36 = AGR-4-180° + AGW-500-1



## MODULE CALLOUTS

AGM-35 = AGR-4-90-M +

AGW-500-1

AGM-36 = AGR-4-180-M +

AGW-500-1

## QUICK TECHNICALS

**Payload Capacity of Rotary Assembly:** = (1) AGW-500-1 Gripper + 190 oz.

**Gripper:** AGW-500-1  
**Stroke:** 1.500 in.  
**Closing/Opening:** 84/86 lbs/in<sup>2</sup>  
**Piston Bore:** (4) x 0.875 in.

**Rotary:** AGR-4  
**Degree of Rotation:** 90°/180°  
**Piston Bore:** (2) x 1.250 in.

**Assembly Weight w/o Payload:** 128 oz.

Refer to catalog for individual product specifications

